

XC936



WHEEL LOADER

 **SOLID TO SUCCEED**



1.扫描关注“徐工装载机二维码”
2.点击注册左下角“装载机之王”，了解更多产品详情



UNITED HEAVY EQUIPMENT & EARTH MOVERS PVT. LTD.

VOITH Complex | Ananda Nagar, Dhumbrahi, Nepal
Tel.: +977 01 4542901-05, Cell : +977 98512 17690
Fax : +977 01 4008813, P.O. Box: 233/2640
Email: info@uheem.com.np, Web: www.uheem.com.np



About XCMG

As a 100 billion-level leading company renowned for the largest scale, the most advanced technology, the largest export volume, and the highest competitiveness and influence in China's construction machinery industry, Xuzhou Construction Machinery Group Co., Ltd. (XCMG) not only has dominated the Chinese market for decades, but also is committed to expanding its worldwide presence as the third largest supplier in this field and 395th of Global 500.

The product portfolio offered by XCMG covers 16 categories such as hoisting machinery, excavation machinery, concrete machinery, mining machinery, earthmoving machinery, and road construction machinery, as well as three key components, i.e., hydraulic systems, transmission systems and electrical control systems. In these areas, our hoisting machinery ranks first in the world, and our complete solutions for road construction and maintenance machinery, piling machinery and concrete machinery also take the leading position in global rankings.

XCMG has been granted more than 8,000 patents in total, including more than 1,900 invention patents and more than 130 international PCT patents.

We have established our own R&D centers, manufacturing plants or KD factories in more than 10 countries, e.g., Germany, USA, Brazil and India, and have acquired 3 European companies including Schwing from Germany.

The manufacturing factory in Brazilian, which is built on a barren land with an investment of USD 350 million, has become a successful model of China-Brazil economic cooperation. At present, our products are exported to 187 countries and regions, covering 97% of the countries along the "Belt and Road". XCMG takes the largest share of the business exported to 35 countries, with the annual export volume and overseas revenue remaining in first place and outperforming all other competitors in China.



Drivetrain system



- Engine: China II turbocharged engine integrated with three-stage desert air filter suitable for dusty conditions, and mechanical pump with simple structure to ensure high reliability and excellent power performance, features not only higher reliability and adaptability, but also lower fuel consumption and emission. It can be configured with an optional low-temperature start unit.
- Transmission: The fixed shaft power-shift transmission is connected with a single-stage single-phase three-element hydraulic torque converter, designed with multiple gears (4 forward and 2 reverse) to meet the speed requirements under different operating conditions. This fixed shaft transmission features numerous advantages, including outstanding reliability, high transmission efficiency, simple structure, convenient maintenance, and easy shifting.
- Drive axle: It is configured with heavy-duty drive axles for construction machinery, featuring stable quality, reliable performance and easy maintenance.

Hydraulic system



- Integrated with sophisticated and reliable single-pump shunt and load-sensing full hydraulic steering technology, improving the lifting capacity by increasing the pressure of the operating system up to 20.5MPa. Reducing the total cycle time through the design of high pressure and small displacement. Integrated distribution valve with manually-operated actuator, improving the system efficiency, and reducing energy and fuel consumption. In addition, the pipelines are optimized and upgraded to facilitate installation and connection, while reducing the pressure loss in the pipelines, and minimizing the heat generation of the hydraulic system to reduce failures of the vehicle.

Brake system



- The vehicle is configured with service brake and parking brake. The air over hydraulic brake system based on caliper-disc four-wheel brake features advantages of smooth braking, excellent safety and reliability, simple structure and convenient maintenance. The application of dust-proof high-flow respirator on the booster pump is easy to maintain and improve the cleanliness of the interior of the pump and the like component.

Cab and steering system



- XCMG's innovative micro-pressurized cab is featured with spacious, bright and enclosed space. The high-quality shock absorber is connected to the frame, which greatly reduces the vibration of the cab. The airbag shock-absorbing seat with composite control can improve the riding comfort; and the high-power air conditioner designed with heating and cooling modes supports intelligent temperature control to provide the operator with a suitable temperature all the time.
- Designed with spacious, bright and well-enclosed room and fully-covered aesthetic interior, the cab can ensure lower noise level around the operator's ears due to sound-proof structure of the cab and hood, and create comfortable and quiet environment for the operator. The large-arc hyperboloid glass featuring a wider view of field and minimized blind areas around the machine, enables the operator to easily observe the rear of the machine and the edges of the bucket, and improve the productivity thanks to comfortable driving and operating experience.

Maintainability



- Inspection and maintenance of the machine to be carried out simply on the ground or platform, providing sufficient maintenance areas which are always accessible through three points to ensure the safety and convenience of maintenance and routine inspection activities.
- All maintenance points for oil level inspection, fuel, oil and grease filling, etc., are easily accessible, and the maintenance and replacement of air filter elements and electrical equipment can be carried out conveniently.

Frame



- Through the optimization design of structural parts and verification based on the fatigue test, all structural parts and linkage mechanisms are designed according to required overall strength, in order to reduce stress concentration, and protect structural parts.
- Reasonable layout of the front and rear frames, simple structure combined with reinforced key load-bearing parts, ensure optimal overall strength.
- Increased distance between the upper and lower hinge pins at the pivot point, distributing and reducing the stress of the hinge pins, and improving the service life of the bearings.
- Front frame designed with excellent rigidity, providing a solid mounting base for the boom and oil cylinder, which can absorb higher torsion, impact and loading operation force.
- Introducing welding toe fatigue life improvement technology to prevent welds from cracking when the vehicle is operating under severe conditions.
- Adopting powder electrostatic coating and special anti-corrosion technologies to solve the problem of corrosion.
- Configured with heavy-duty power & free conveyor system to minimize transportation pollution, improve the cleanliness of components, and ensure the accuracy of assembly and fitting.

Operating unit and bucket



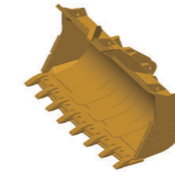
- Optimized operating tools designed with Z-type reverse six-linkage structure integrated with single rocker arm, short tie rod and horizontal boom cylinder, featuring superior operating performance and efficiency.
- The boom beam adopting rectangular tube structure can effectively avoid stress concentration, welding defect and the like phenomena, and improve the structural strength. All pins adopt special heat treatment process of special material with high strength, good wear resistance and long service life.
- All hinge pins designed with dust-proof lubrication structure to prevent grease from dust and contamination, and provide reliable protection for hinge pins and bushings, and configured with centralized lubrication system as standard to minimize maintenance time.
- Bucket made of high-strength wear-resistant plates and teeth supplied by world-class brands to ensure higher durability.

main components

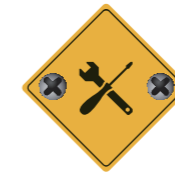
Item	Parameter	Parameter
Rated bucket capacity m ³	2.1	1.8 (small-height dumping)
Rated load kg	3500	3000
Operating weight kg	10300±200	10400±200
Dumping height mm	2900	3240
Dumping range mm	1030	1075
Wheel base mm	2900	2900
Wheel track mm	1850	1850
Min ground clearance mm	365	365
Overall length mm	7250	7450
Overall height mm	3100	3100
Bucket width mm	2482	2482
Dumping angle (°)	45	45
Max breakout force kN	125±5	120±5
Max tractive force kN	95±5	95±5
Center of tyre (turning radius) mm	5100	5100
Boom lifting time S	≤5.0	≤5.0
Total cycle time S	≤8.5	≤8.5
Engine	Nominal power KW	92
	Nominal speed r/min	2200
Travel speed Km/h	1 forward/reverse gear	8/10
	2 forward/reverse gear	14/31
	3 forward gear	26
	4 forward gear	43

• The technology of XCMG loader is subject to constant improvement and upgrading. In case the specifications or detailed appearance contained in this brochure differ from actual products, the latter shall prevail;

• XCMG reserves the right of final interpretation for the above. Our products may be modified without prior notice to users.



XCMG approved attachments



Genuine parts



Financial solutions



Maintenance contract



Telematics

Professional Integrated Complete Solutions

XCMG has built a strong reputation based on the quality, reliability and durability of its construction machinery. What's more, XCMG has gradually established a service network to constantly provide its local integrated and highly efficient complete solutions for all customers.

Full Range of Services Ready for you

In order to respond to your needs as fast as possible, XCMG's experts are on their way to your job site from one of our facilities near you. Full range of services are available in order to reduce your total cost of ownership and increase your revenue.



XCMG Global Spare Parts System

The screenshot displays the XCMG Global Spare Parts System interface. It features a navigation menu on the left with categories like 'QUICK CHANGE MECHANISM', 'DRIVE AXLE SYSTEM', 'TRANSMISSION AND TORQUE', 'UNDERCARRIAGE SYSTEM', 'CENTRALIZED EXHAUSTION', 'REAR MUDGUARD', 'REAR FRAME SYSTEM', 'COUNTERWEIGHT', 'COOLING SYSTEM', 'ENGINE HOOD ASSEMBLY', 'LIFTING SYSTEM', 'ENGINE SYSTEM', 'QUICK FILL SYSTEM', and 'GPS SYSTEM'. The main content area shows a detailed parts list for the '20382380 CAB SYSTEM' with columns for 'Number', 'Material Encoding', 'Name', 'Quantity', and 'Units'. A 3D exploded view of the cab system is shown on the right side of the interface.