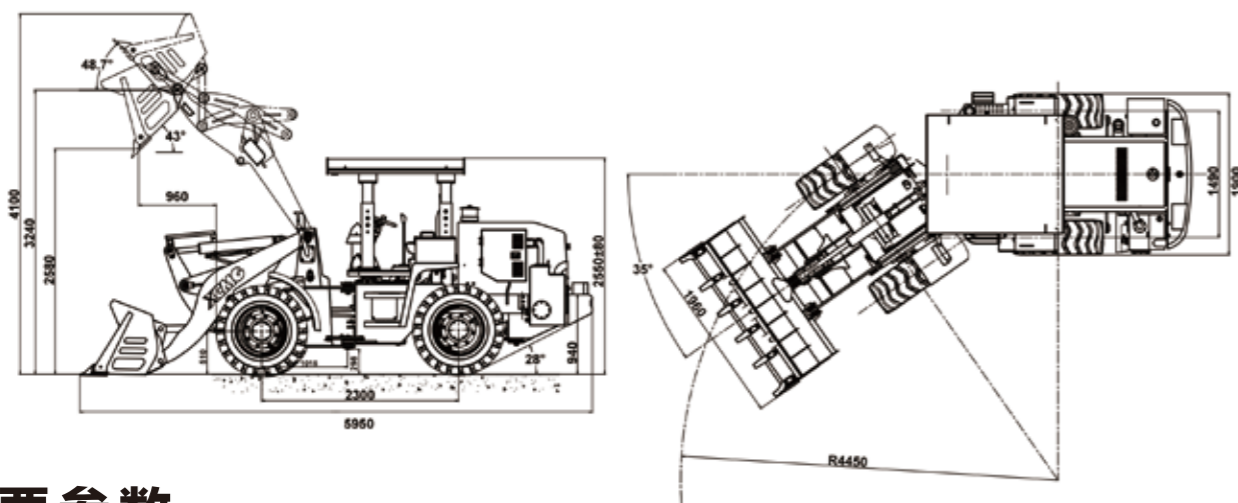


## 外形尺寸

Outline Dimensions



## 主要参数

MAIN SPECIFICATIONS

Description		参数 Specification	单位 Unit	
额定载荷	Rated operating load	2000	kg	
额定斗容量	Bucket capacity	1	m <sup>3</sup>	
整机工作质量	Machine weight	6400	kg	
卸载高度 (地面至主刀板)	Dump clearance at maximum lift	2580	mm	
卸载距离 (前轮至主刀板)	Reach at maximum lift	960	mm	
轴距	Wheel base	2300	mm	
轮距	Tread	1490	mm	
最大掘起力	Max.breakout force	56	kN	
最大牵引力	Max.horse power	45	kN	
动臂提升时间	Hydraulic cycle time-raise	5	s	
三项和时间	Total hydraulic cycle time	9	s	
最小转弯半径 (铲斗外缘)	Min circle radius over outside bucket	5100	mm	
最小转弯半径 (轮胎中心)	Min. turning radius over tyres	4450	mm	
铰接角度	Articulation angle	35	°	
爬坡能力	Gradeability	28	°	
轮胎规格	Tyre size	16/70-20		
整机外形尺寸 长×宽×高	Overall machine dimension L×W×H	5950X1960X2550	mm	
发动机型号	Model	LR4B3ZU-G73X3QR-U3		
额定功率/转速	Rated Power/Speed	66.2/2400	kW/rpm	
行驶速度	一档 (前进/后退)	I-gear(F/R)	10	km/h
	二档 (前进/后退)	II-gear(F/R)	28	km/h

随技术进步, 样本内容、产品结构、配置参数等将不断改进, 恕不另行通知。样本信息与实物存在差异的, 以实物为准。  
No further information of sample contents, product structure and configuration parameters updates.  
There may be some difference between sample books and material objects. Please kind prevail.



## UNITED HEAVY EQUIPMENT & EARTH MOVERS PVT. LTD.

VOITH Complex | Ananda Nagar, Dhumbarahi, Nepal  
Tel.: +977 01 4542901-05, Cell : +977 98512 17690  
Fax : +977 01 4008813, P.O. Box: 233/2640  
Email: info@uheem.com.np, Web: www.uheem.com.np



徐工徐工 助您成功  
XCMG FOR YOUR SUCCESS

# LW200KV 矿井王

LW200KV Mine King

轮式装载机 WHEEL LOADER



项目 Description	LW200KV 矿井王 LW200KV Mine King
额定斗容 Rated bucket capacity	1m <sup>3</sup>
额定载重 Rated loading capacity	2000kg
额定功率 Rated power	66.2kW
整机重量 Gross weight	6400±300kg
卸载高度 Dumping height	2580mm
最大掘起力 Maximum breakout force	56kN

201903

徐工铲运机械事业部  
XCMG EARTH MOVING MACHINERY BUSINESS UNIT

# 坚实·厚重 全能旗舰 重载标杆

High firmness and steadiness Almighty Flagship and Heavy-Duty Benchmarking Product

## 机型特点

### Model Characteristics

- 徐工特有重载节能型传动系。  
XCMG unique heavy-duty energy-saving drive system.
- 徐工特色超强重载型结构件。  
It's equipped with XCMG unique super-strong heavy-load structure parts.
- 超长轴距，超大会自重，作业稳定性行业领先。  
With ultra-long wheelbase and ultra-high dead weight, the working stability is leading the industry.
- 结构件全面采用计算机辅助设计，坚固、可靠。  
The computer aided design is comprehensively applied for the structural parts to ensure high firmness and reliability.
- 针对井下工况的多种专业设计，适应井下各种复杂工况施工要求。  
The multiple professional designs in response to underground working conditions adapt to the construction needs of various underground complicated working conditions.

## 性能特长

### Performance Highlights

- 掘起力（56kN）、牵引力（45kN）、轮距（1490mm）、大斗容（1m<sup>3</sup>），缔造行业2吨级井下机效率极限。  
With high breakout force (56kN) and traction force (45kN) and large wheel tread (1,490mm) and bucket capacity (1m<sup>3</sup>), this product created the ultimate efficiency limit among the industry's 2t underground machines.

## 市场地位

### Market position

- 超强重载，井下装载机领跑机型。  
Leading underground loader model with super-strong heavy-load capacity.

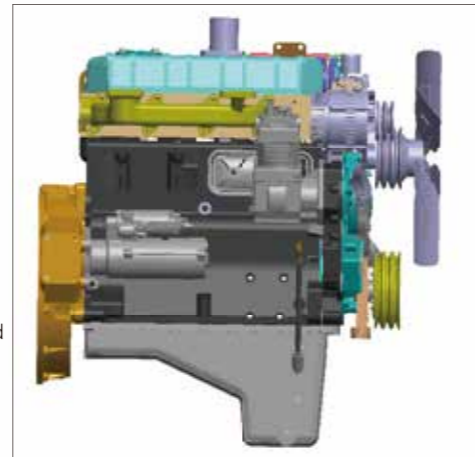


# 品质卓越 的动力和传动系统

Excellent quality power and drive systems

## 澎湃动力 | Strong power

- 国三排放，徐工专用型。
- 马力强劲，扭矩储备系数大，满足瞬间超负荷要求，充分提供重载、大负荷作业所需动力。
- 最大牵引力可达45kN，行业领先。
- XCMG's exclusive China-III emission compliant engine.
- With strong power and high torque reserve factor, this engine meets the instant overload demand and sufficiently provides the power required for heavy-load operations.
- Industry's leading traction force (Maximum traction force at 45kN).



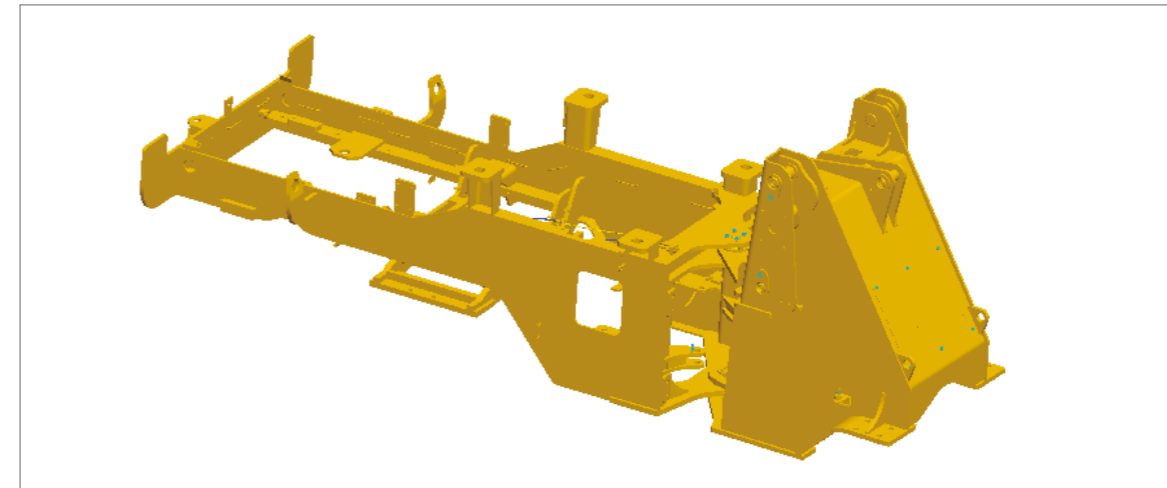
## 徐工专利技术重载节能型变速箱 XCMG's Patented Heavy-Duty Energy-Saving Transmission

- 2BS280变速箱，关键承重部位采用进口元件，承受超载能力强。
- 专用大能容变矩器，确保发动机动力被最大程度利用。
- 传动轴法兰采用DIN和SAE标准，增大固定螺栓分布圆直径，超强抗扭，适应高强度、连续性、重负荷工作。
- The imported products are applied for the critical load-carrying portions of 2BS280 transmission to achieve high load-carrying capacity.
- The special high capacity torque converter ensures the maximum utilization of engine power.
- The drive shaft flanges are of DIN and SAE standard specification and the distribution diameter of the fastening bolts is enlarged to realize super-strong torsion resistance and adapt to high strength and heavy-load continuous operations.



## 性能卓越的加强型重载驱动桥 Enhanced heavy-duty drive axle of outstanding performances

- 各承载部位饱满、厚实，具有良好的抗过载能力，满足各种高强度、高负荷作业需要。
- All load carrying portions are solid and firm enough to ensure excellent overload resistance and meet the needs of various high strength and high load operations.



### 超强承载能力的车架结构 Frame structure of super-strong carrying capacity

- 重载设计，箱型结构，机器人焊接，板材厚，焊缝牢，抗扭系数高，过载能力强。
- 采用有限元分析技术，减少应力集中，消除局部薄弱，车架耐冲击、抗超载，各种超重工况游刃有余。
- The heavy-duty design, box-shaped structure, and robot welding ensure high plate thickness, secure welds, high torsion resistance coefficient, and strong overload capacity.
- The finite element analysis technology is adopted to reduce the stress concentration and eliminate the partial weaknesses so that the frame is resistant against impact and overload and handles with ease all kinds of overload conditions.

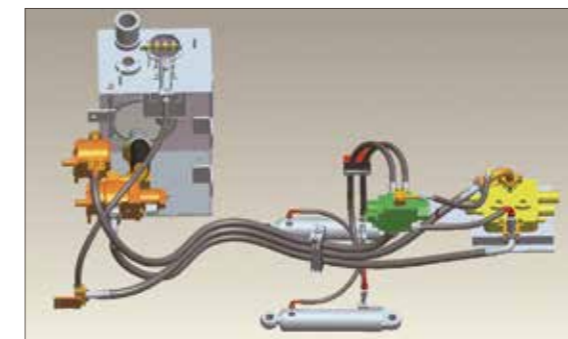
### 车架铰接坚实可靠 Secure and reliable frame hinge joints

- 近等距铰接设计，减小转弯半径，降低轮胎磨损和能量损耗。
- 上下铰接板间距大，结构强度高，维修空间充分。
- The asymptotically isometric hinged design reduces the turning radius and lowers the tire wear and energy consumption.
- The large spacing between upper and lower hinged plates realizes different structural strengths and sufficient repair space.



## 国际品质液压、电器元件 International quality hydraulic and electric units

- 一流的分配阀，转向优先，压力损失小，系统发热少，部件可靠性高。
- 顶级品牌液压泵，提供更强劲的液压动力。



- 采用耐高压的液压胶管，耐热、抗压，寿命长。
- 液压管路采用国际DIN标准24°锥加O型圈两道密封，密封性更好，有效解决渗漏难题。
- 线束采用进口品质材料，优化工艺布局，确保电路系统可靠。
- The first-class distributor valve (steering priority) guarantee low pressure loss, less system heat, and high reliability of parts.
- The leading brand hydraulic pump supplies stronger hydraulic power.
- The high pressure resistant hydraulic hoses applied feature high heat and pressure resistance and long life.
- The hydraulic pipelines adopt double sealing means (DIN standard 24° taper thread + O-ring) to achieve better sealing performance and effectively solve the leakage problem.
- The harnesses are made of imported quality material and the process layout is optimized to ensure reliable electric circuit system.

历经考验的超强重载型结构件  
Long-tested super-strong heavy-duty structural parts

# 安全舒适的驾驶空间

Safe and Comfortable Driving Space



行业率先推出的骨架式顶棚结构,安全、可靠。

Industry's pioneering skeleton ceiling structure features high safety and reliability.

操作元件及按钮触手可及,轻松实现各种作业动作。

The easily accessible operating units and buttons can easily realize all kinds of operating motions.

前后车灯采用井下作业专用灯泡,配倒车报警,视线良好,倒车安全。

The front and rear lamps use the special underground operation lamp bulbs and the reversing alarm is installed to achieve good visibility and ensure reversing safety.

# 维修保养 轻松便捷

Convenient Maintenances

- 新型骨架结构发动机罩,上翻式大侧门,开启角度大,发动机及散热器检修、保养更轻松。
- 集中式保险丝盒,电器系统运行状况集中显现,维护方便。
- 液压油箱回油路的独立腔设计,保证了维修保养的方便性。

- The framework structure engine hood and the uplift large side doors boast large opening angle and make the checking, repair, and maintenance easier for the engine and radiator.
- The central fuse case centrally indicates the working status of electric system and eases the maintenances.
- The independent chamber design for oil return line of hydraulic oil tank guarantees the convenient maintenances.



# 高强耐磨的铲斗设计

High strength wear-resistant bucket design

采用高强耐磨材料 Application of high strength wear-resistant material

铲斗全面使用高强度钢板,耐磨性能、耐冲击性能提高30%以上,使用寿命更长。

The bucket is thoroughly made of high strength steel plates to improve the wear resistance and impact resistance by more than 30% and prolong the service life.

关键部位特别强化 Specially enhanced critical portions

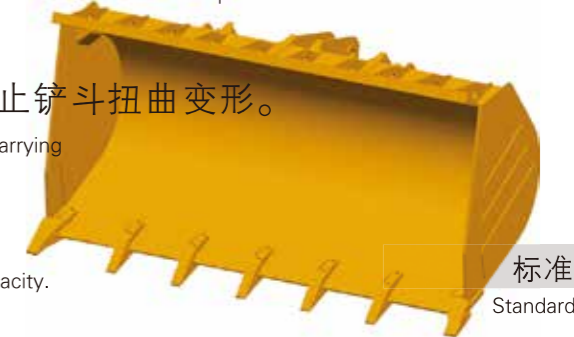
关键受力部位采用加强筋板的结构设计,防止铲斗扭曲变形。

The reinforcement ribbed plate structure design is applied for critical load-carrying portions to prevent the distortion and deformation of the bucket.

采用高挡板结构 High Guard Plate Structure

减少物料散落,保证最大物料装载量。

It reduces the splashing of materials and guarantees the maximum load capacity.



标准斗  
Standard bucket

# 针对井下专用工况的 多种专业设计

Diversified Professional Designs for Special Underground Working Conditions

- 1、配水处理装置,有效过滤尾气中的烟、粉尘,保证井下作业环境空气质量。
- 2、驾驶棚上下三级可调,可根据井下工况调节驾驶棚高度,以适应不同工况需求。
- 3、可选配加大斗、加长臂、侧卸等高效工作装置,满足不同作业需求。
- 4、废气处理箱增加防腐蚀处理工艺,有效提高废气处理箱使用寿命。

1. The water treatment device is equipped to effectively filter out the smoke and soot from in the exhaust gas and guarantee the air quality of underground operating environment.
2. With three-level adjustable function, the cab shelter can be adjusted vertically based on the underground condition to adapt to diversified operation needs.
3. The optional high-efficiency working devices, including enlarged bucket, extended boom, and side-dumping device, can be equipped to meet the needs of diversified working conditions.
4. The anti-corrosion treatment process is additionally taken for the exhaust gas treatment tank to effectively prolong the life of exhaust gas treatment tank.

