

XCMG Truck mounted crane  
Technical for SQS68TL-4



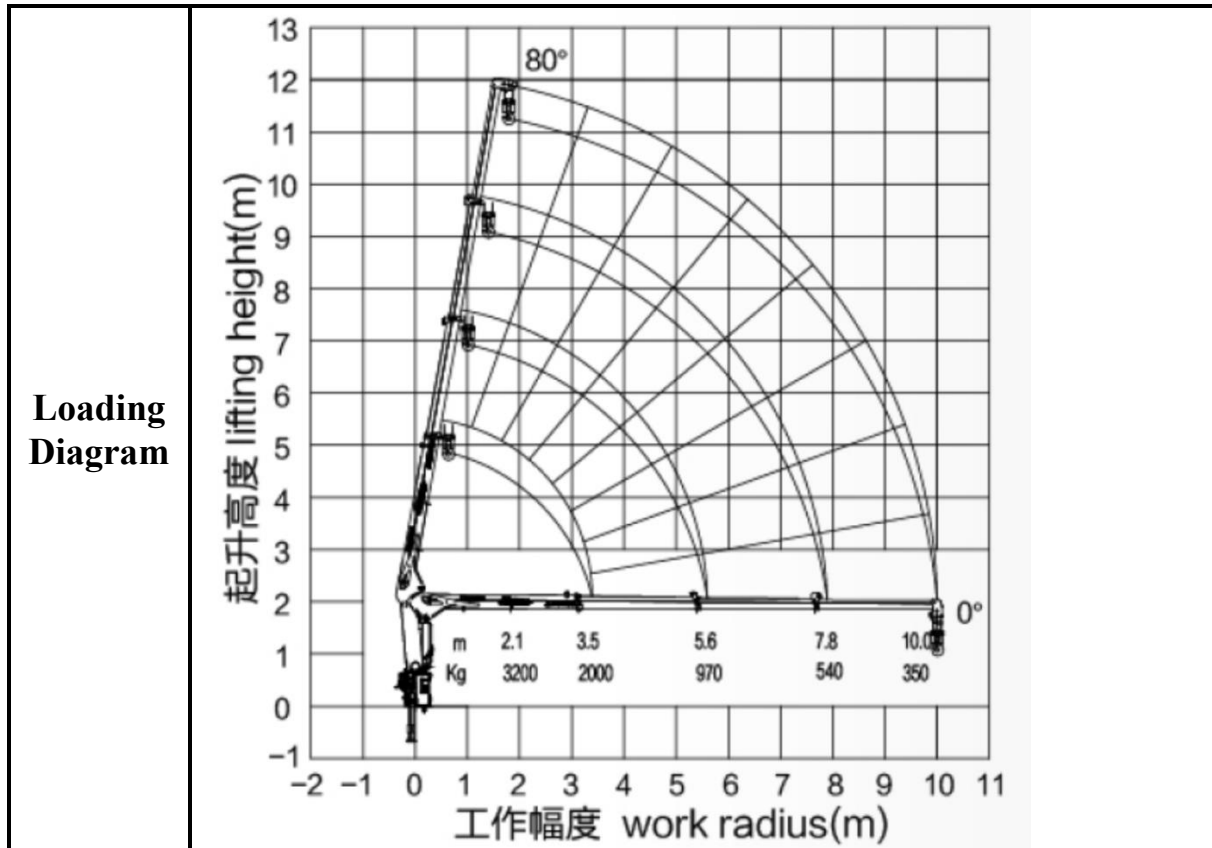
\*Picture just for reference

**XCMG, the leading boom truck manufacturer with 60% market share in China, provides reliable and cost-effective lifting and transport solutions.**

## Technical Parameters

| Description                       |  | Parameter   |   |
|-----------------------------------|--|---|---|
| Brand                             |  | XCMG  |   |
| Model                             |  | SQS68TL-4   |   |
| chassis                           |  | ZZ1148E4515C1R<br>(right hand drive)  |   |
| Overall dimension                 |  | 8000×2300×3510mm  |   |
| Carriage dimension                |  | 500×2294×550mm  |   |
| Model of engine                   |  | YC4D130-33, 130HP   |   |
| Emission standard                 |  | Euro II   |   |
| <b>Truck Mounted Crane (Boom)</b> |  |   |   |
| Capacity                          | Max. Lifting moment  | 6.72 T.M  |   |
|                                   | Max. Lifting capacity  | 3200 kg at 2.1 m  |   |
|                                   | Max. Working radius  | 10m   |   |
|                                   | Max. Lifting height  | 12.3m   |   |
| Boom                              | type/section   | Hexagon / 4 section boom with single cylinder   |   |
|                                   | Boom length  | Min. 3.645 m ~ Max.10.17 m  |   |
|                                   | Boom Extension speed   | 6.525m/20 sec   |   |
|                                   | Boom moving up and down speed                                    | 0-75/13 °/sec   |   |
|                                   | Wire rope  | 18X7+FC Ø 8mm x60m  |   |
| Slewing                           | Hook speed   | 35.6m/min (4th layer / 4 fall lines)  |   |
|                                   | Turning angle  | Consecutively turn 360°   |   |
|                                   | Turning speed  | 2.5 rpm   |   |
| Slewing gear type                 | Hyd. motor driven, combined type of planetary gear and worm gear |   |   |
|                                   | type   | Front   | Vertically automatically extracted and retracted, manual control horizontally direction |
| Hydraulic system                  | Rated pressure   | 20MPa   |   |
|                                   | Rated flow rate  | 50 L/min  |   |
| Hydraulic oil tank capacity       |  | 60L   |   |
| Working environment               |  | -30℃-+40℃   |   |
| Crane dead weight                 |  | 1265 kg   |   |
| Operate position                  |  | Ground control on both sides  |   |
| Standard safety devices           |  | <ol style="list-style-type: none"> <li>1. Pressure relief valve for hydraulic circuit</li> <li>2. Counter balance valves for raise and telescope cylinder</li> <li>3. Pilot check valves for vertical outrigger cylinder</li> <li>4. Pressure gauge / Boom angle indicator</li> <li>5. Hook safety latch / Alarm buzzer</li> <li>6. Over-winding device</li> <li>7.hook automatically lock</li> </ol> |   |
| option                            |  | <ol style="list-style-type: none"> <li>1. Overload prevention system</li> <li>2. Oil Cooler</li> </ol>  |   |

|                               |  |
|-------------------------------|--|
| <p><b>Profile Drawing</b></p> | <p>3645-10170<br/>3471-9996<br/>2209<br/>1813<br/>679-1184<br/>517</p> |
| <p><b>Profile Drawing</b></p> | <p>2164-3804(1964-3414)<br/>2300(2100)<br/>1018</p>                    |



**Loading chart**

| Working radius(m)<br>Rated load(kg) |      | 2.1            | 2.5  | 3    | 3.5  | 4    | 4.5  | 5    | 5.5 | 6          | 6.5 | 7   | 7.5 | 8          | 8.5 | 9   | 9.5 | 10  |
|-------------------------------------|------|----------------|------|------|------|------|------|------|-----|------------|-----|-----|-----|------------|-----|-----|-----|-----|
|                                     |      | Boom length(m) | 3.65 | 3200 | 2700 | 2300 | 2000 |      |     |            |     |     |     |            |     |     |     |     |
| 5.82                                | 2200 |                | 2100 | 1800 | 1650 | 1450 | 1250 | 1100 | 980 | 970 (5.6m) |     |     |     |            |     |     |     |     |
| 8                                   | 1750 |                | 1550 | 1400 | 1250 | 1150 | 1050 | 950  | 850 | 750        | 680 | 620 | 570 | 540 (7.8m) |     |     |     |     |
| 10.2                                |      |                | 1300 | 1150 | 1050 | 970  | 970  | 810  | 740 | 680        | 600 | 550 | 500 | 450        | 420 | 390 | 370 | 350 |

**XCMG, the leading boom truck manufacturer with 60% market share in China, provides reliable and cost-effective lifting and transport solutions.**



**UNITED HEAVY EQUIPMENT &  
EARTH MOVERS PVT. LTD.**

VOITH Complex | Ananda Nagar, Dhumbarahi, Nepal  
Tel.: +977 01 4542901-05, Cell : +977 98512 17690  
Fax : +977 01 4008813, P.O. Box: 233/2640  
Email: [info@uheem.com.np](mailto:info@uheem.com.np), Web: [www.uheem.com.np](http://www.uheem.com.np)