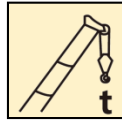
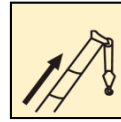


XCT80_Y1 (Indonesia) Truck Crane

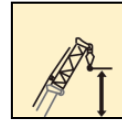
Technical specifications



80t



50.5 m



65 m

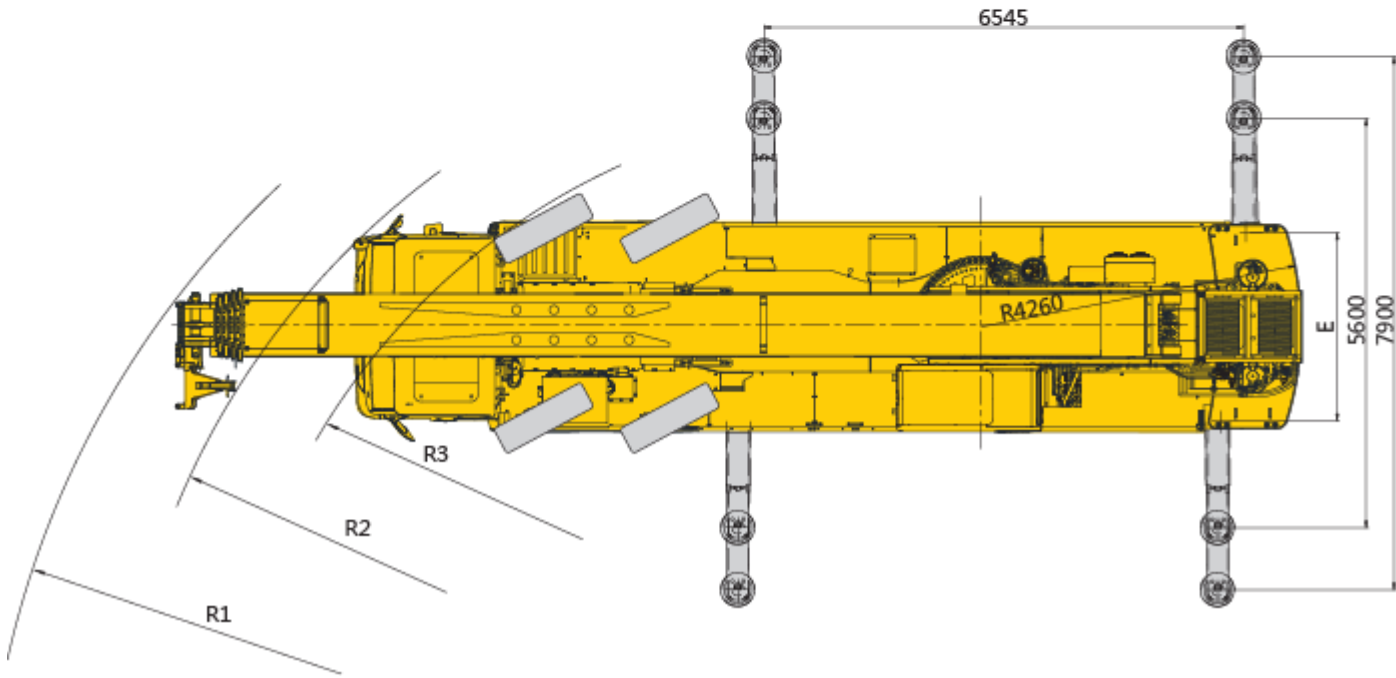
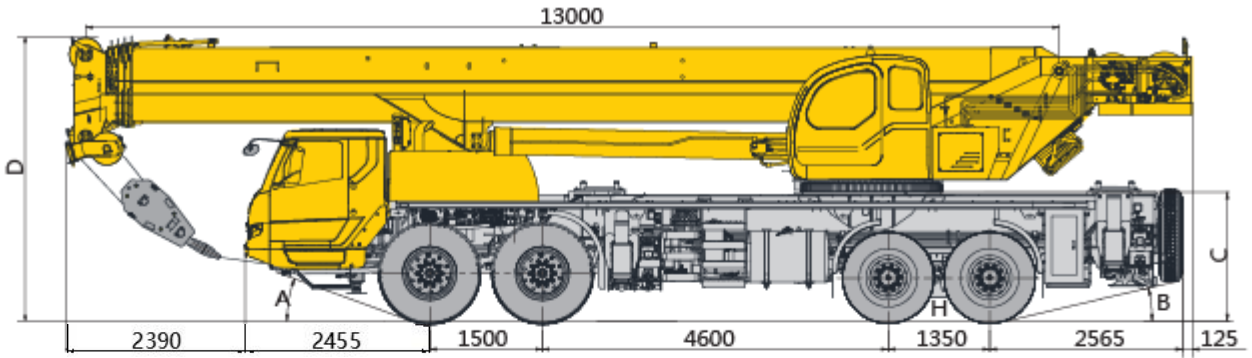


First edition, March 2024

Contents

| | |
|---------------------------------------|-------|
| Dimensions | 2 |
| Technical specifications | 3-4 |
| Weight | 5 |
| Working speed | 6 |
| Counterweight | 7 |
| Dimensions of parts to be transported | 8 |
| Boom / Jib combinations | 9-10 |
| Boom | 11-13 |
| Jib | 14-15 |
| Description of symbols | 16 |
| Table of main technical parameters | 17-18 |
| Notes | 19 |

Dimensions



| | A | B | C | D | E | R1 | R2 | R3 | R4 | H |
|------------|-----|-----|------|------|------|-------|-------|-------|-------|-----|
| 385/95 R25 | 22° | 13° | 1715 | 3790 | 2800 | 15200 | 13500 | 13500 | 12000 | 373 |
| 325/95R24 | | | | | | | | | | |

Technical specifications



Chassis


| | | |
|--------------------------|---|---|
| Frame | Designed and manufactured by XCMG, the frame is made of high strength steel with fully covered walking surface and anti-torsion box-typed structure. | ● |
| Outrigger | Four outriggers arranged in H-shape are hydraulically controlled by control levers. Double-stage outrigger beams are adopted. There are outrigger control levers located at each side of the chassis, and there is a level gauge, LED illuminator and speed buttons in each control panel. There is a check valve fitted in each outrigger cylinder, and a double-way hydraulic lock fitted in each jack cylinder. Float dimension: 435mm×435mm Reaction force of outrigger at max. lifting load: 784kN | ● |
| Engine | WP9H350E50, in-line, 6-cylinder, water cooled, electrical diesel engine manufactured by Weichai, with rated power of 257 kW/1900 rpm and max. torque of 1700 Nm/1100~1400 rpm. Max. engine reference torque can reach 1832 N.m. Compliant with China V emission standard. AdBlue tank capacity: 34.3 L. Fuel tank capacity: approx. 430 L. | ● |
| Transmission | Manual transmission, made by Shaanxi Fast Gear Co., Ltd., 10-forward speed and 2-reverse speed. | ● |
| Axles | High strength axles, made by famous manufacturers. Axles 1 and 2 are for steering, while axles 3 and 4 are for driving. | ● |
| Suspension system | Leaf spring suspension is used as front suspension, and rubber suspension is used as rear suspension. | ● |

| | | |
|--------------------------|--|---|
| Tires | 12 tires and 1 spare tire, 1st and 2nd axles are equipped with single tire, 3rd and 4th axles are equipped with double-tire. Tire specifications: 385/95R25 (front axles). 325/95R24 (rear axles) | ● |
| Brake system | Service brake: dual-circuit air pressure brake acting on all wheels. Parking brake: spring-loaded brake, acting on the wheels of axles 2, 3 and 4. Auxiliary brake: engine in-cylinder retarder brake. | ● |
| Steering system | Axles 1 and 2 are mechanically steered + hydraulic power assistance. | ● |
| Driver's cab | Windshield with wide visual field, electric wiper and electric window lifters are available; heater and air conditioner can let the air blow face or feet or realize defrosting; radio player is also equipped. Mechanical shock-absorbing seats for the main driver, and a coupled sleeper for the co-driver's seat. Fire extinguisher of 3 kg. | ● |
| | Backup camera | ○ |
| Electrical system | 24 V DC, two sets of 12 V battery in series. Generator: 28 V-80 A. | ● |
| Others | Beacon light | ○ |


Product parts list is as mentioned above. Please refer to the product quotation for specific parts.
Symbol explanation:

- — Standard configurations;
- — Optional configurations.

Technical specifications

|  | Superstructure | | Superstructure | | |
|--|--|---|-------------------------------|--|---|
| Structure | Designed and manufactured by XCMG, made of high strength steel. | ● | Operator's cab | New steel cab is equipped with a front window. Safety glass and sun shield are used for windows. Standard controls and indicators are ergonomically arranged in the cab. The cab features a new ergonomic seat design with backrest adjustment and armrests with joysticks fitted. Wipers are fitted for the windshield and roof window. | ● |
| Hydraulic system | Variable pump driven by chassis engine, used for hoisting, elevating and telescoping operations. Load sensing proportional multi-way change valve with impact resistance valve and cavitation-proof valve integrated; air-cooled hydraulic oil cooler. Tank capacity: 1206L | ● | | Heater and air conditioner | ○ |
| Operating method | Pilot hydraulic control is used for controlling the superstructure. All crane movements are controlled by the hydraulic pump and proportional valve through two control levers on the left and right sides. | ● | Safety devices | Hydraulic balance valve, hydraulic relief valve, double-way hydraulic valve, LMI, lowering limiter for preventing wire rope from over-releasing, anti-two block at boom head for preventing wire rope from over-winding and tri colored light bar | ● |
| Winch system | Hydraulic control is used for speed regulation. The system is driven by a hydraulic motor through a planetary gear reducer, with a normally closed brake, a balance valve and a grooved drum equipped. | ● | | Anemometer | ○ |
| Slewing system | Four-point contact-ball slewing ring is driven by the planetary gear reducer of slewing mechanism, which is driven by a hydraulic motor, and may continuously slew 360°. Power control and free slewing function as well as stepless speed regulation are available. There is a horn switch fitted on the slewing control lever. | ● | | Slewing beacon light | ○ |
| | | | Combined counterweight | 8t | ● |
| | | | | 5t | ● |
| | | | | 5t | ● |
| Luffing system | A front support dual-acting hydraulic cylinder is equipped for luffing operation, with a counterbalance valve fitted. | ● | Hook block | 55t hook block | ● |
| | | | | 5.5t hook block | ● |

Technical specifications

|  | Boom and jib system | |
|--|--|---|
| Boom | 5-section boom with U cross-section, welding structure. Double-cylinder plus ropes telescoping system Boom length: 13m~50.5m | ● |
| Auxiliary sheave | Installed at the boom top, used for single line operation. Its lifting performance is the same with that of boom, but the max. lifting load can not exceed 5.5t. | ● |
| Fixed jib | Lattice structure for 1st section and box-type structure for 2nd section. Three offset angles of 0°, 15° and 30°. | ○ |
| | Fixed jib length: 9.5 m | ○ |
| | Fixed jib length: 16m | ○ |

Product parts list is as mentioned above.

Please refer to the product quotation for specific parts.

Symbol explanation

- — Standard configurations;
- — Optional configurations.

Weight



| Axle | 1 | 2 | 3 | 4 | Total weight |
|------|-------|-------|------|------|--------------------|
| t | 10 | 10 | 12.8 | 12.8 | 45.6 ¹⁾ |
| t | 11.35 | 11.35 | 21 | 21 | 64.7 ²⁾ |

1) Traveling configuration: 2t fixed counterweight, 55t hook block, 5.5t hook block, auxiliary sheave, spare tire and spare tire bracket, counterweight bracket are carried; 8t counterweight slab, counterweight slab B of 5t, and counterweight slab C of 5t, jib, and front outrigger floats are removed.

Steering mode:8×4×4; tire specifications: 385/95R25 tires for axle 1 and 2 and 325/95R24 tires for axle 3 and 4.

2) Short distance job site transfer: on the basis of the crane in traveling configuration, with maximum traveling speed of 10km/h: counterweight slab B of 5t and 8t at the vehicle tail, counterweight slab C of 5t at the turntable tail are carried.

Steering mode:8×4×4; tire specifications: 385/95R25 tires for axle 1 and 2 and 325/95R24 tires for axle 3 and 4.



| Hook block | Parts of line | Weight of hook block (kg) | Dimension (mm) | Remarks |
|------------|---------------|---------------------------|----------------|-------------|
| 55t | 9 | 470 | 1586×520×452 | Single hook |
| 5.5t | 1 | 150 | 717×370×370 | Single hook |

Working speed



385/95R25 (front axles)
325/95R24 (rear axles)



2.5~48

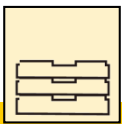
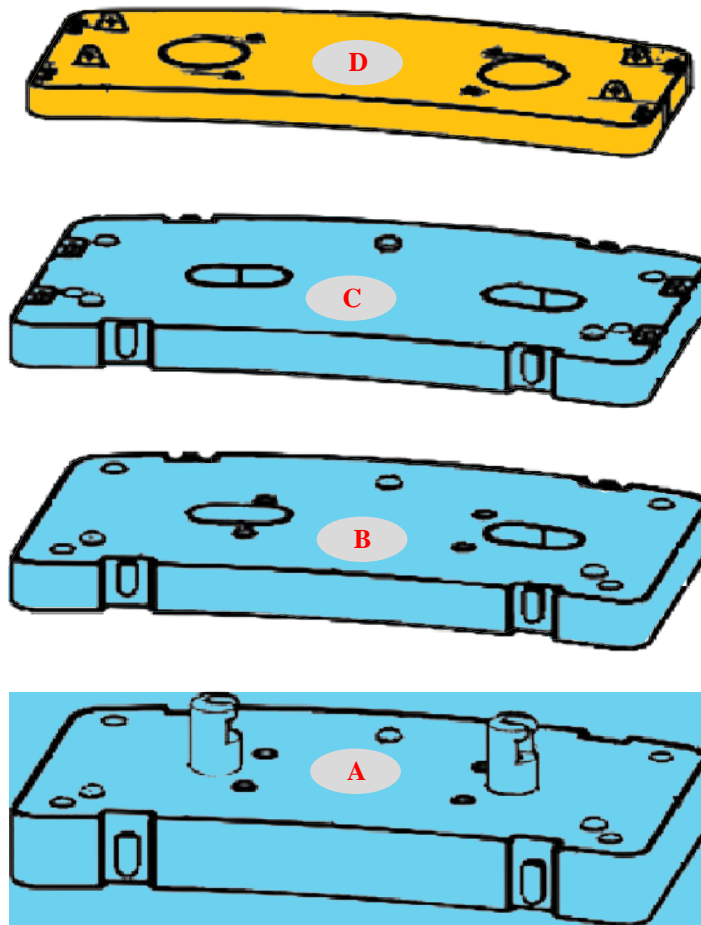


45%



| Operation mechanism | Working speed | Max. single line pull | Rope diameter/ length |
|---------------------|--|-----------------------|-----------------------|
| | 0-135 m/min, single line, 4th layer | 6.7t | 20 mm/250m |
| | 0-90 m/min, single line, 4th layer | 5.5t | 20 mm/145m |
| | 0-1.8 r/min | | |
| | Approx. 55 s for boom luffing up from -0.5° to 81° | | |
| | Approx. 125 s for boom extending from 13m to 50.5m | | |

Counterweight

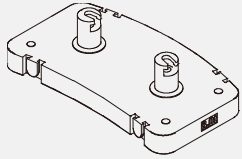
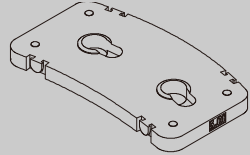
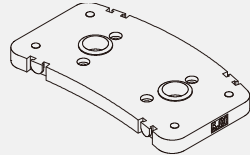
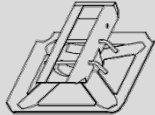



| Counterweight | A | B | C | D |
|-------------------------|---------------|---------------|---------------|---------------|
| Dimensions (L×W×H) (mm) | 2790×1652×690 | 2790×1652×260 | 2790×1652×240 | 2730×1242×226 |
| Weight (t) | 8 | 5 | 5 | 2 |

| Operation modes | 20t | 15t | 10t | 7t | 2t |
|-----------------|---------|-------|-----|-----|----|
| Combinations | A+B+C+D | A+C+D | A+D | C+D | D |

Remark: the blue counterweight slabs are not included in traveling configuration.

Dimensions of parts to be transported

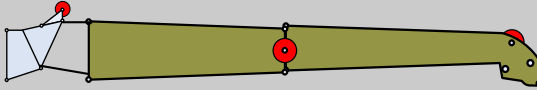
| Components | Structure | Dimensions (L×W×H) (mm) | Weight (kg) | Qty |
|-----------------------|---|----------------------------|-------------|-----|
| Counterweight slab A |  | 2790×1652×690 | 8000 | 1 |
| Counterweight slab B |  | 2790×1652×260 | 5000 | 1 |
| Counterweight slab C |  | 2790×1652×240 | 5000 | 1 |
| Front outrigger float |  | 435×435×120 | 45 | 2 |
| Jib (optional) |  | 10300×980×1420 | 1075 | 1 |

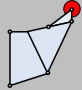


Boom / Jib combinations

Jib: 9.5m



Jib: 16m



| Components | Structure | Dimensions (L×W×H) (mm) | Weight (kg) |
|--------------------------|---|-------------------------|-------------|
| Connecting bracket |  | 1200×880×1200 | 231 |
| 1st jib section assembly |  | 9925×710×1105 | 568 |
| 2nd jib section assembly |  | 6910×450×610 | 264 |

Boom / Jib combinations

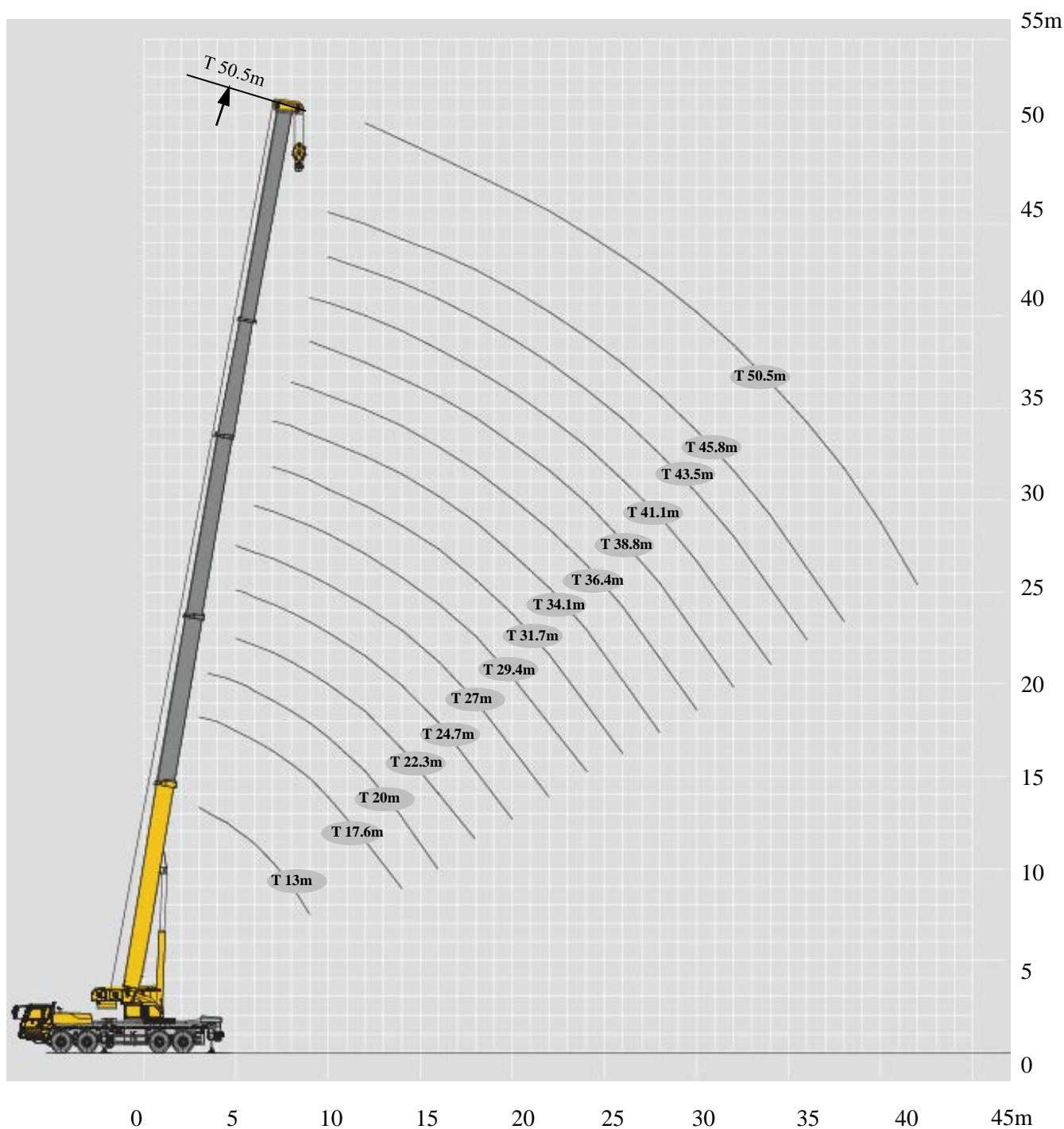


Boom

T: 13~50.5 m

Jib

**T: 50.5 m
J: 9.5/16 m**



Rated load chart

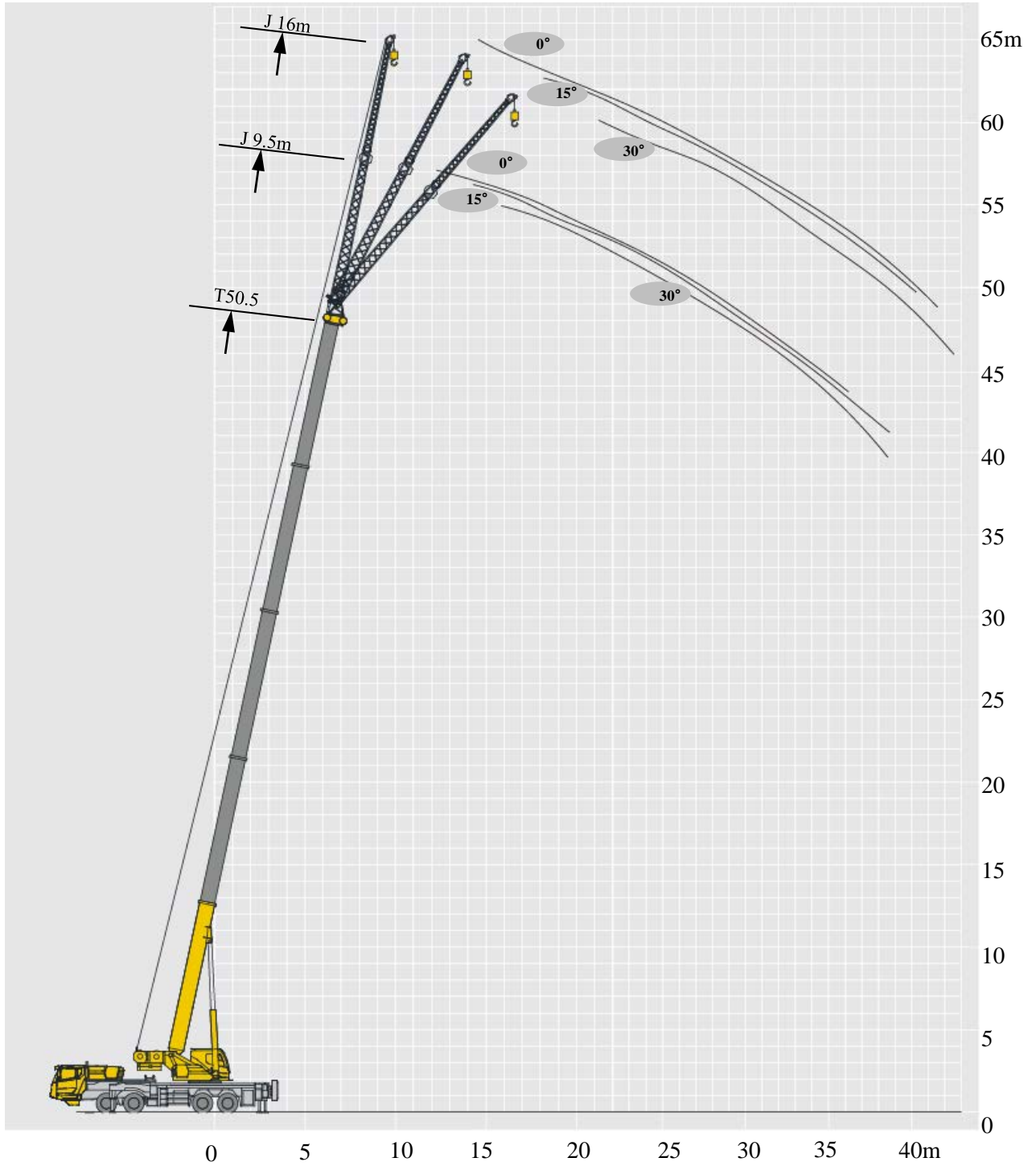
T 13~50.5 m

| | 13-50.5m | | 6.45m×7.9m | | 360° | | 20t | | | | | | | | | | |
|-----|----------|------|------------|------|------|------|------|------|------|------|------|------|------|------|------|-----|--|
| | 13 | 17.6 | 20 | 22.3 | 24.7 | 27 | 29.4 | 31.7 | 34.1 | 36.4 | 38.8 | 41.1 | 43.5 | 45.8 | 50.5 | | |
| 3 | 80 | 70 | | | | | | | | | | | | | | 3 | |
| 3.5 | 75 | 68 | 34 | | | | | | | | | | | | | 3.5 | |
| 4 | 70 | 67 | 34 | | | | | | | | | | | | | 4 | |
| 4.5 | 66 | 63 | 34 | | | | | | | | | | | | | 4.5 | |
| 5 | 60 | 60 | 34 | 40 | 34 | 31.5 | | | | | | | | | | 5 | |
| 5.5 | 55 | 54 | 34 | 40 | 34 | 31.5 | | | | | | | | | | 5.5 | |
| 6 | 50 | 49 | 34 | 40 | 34 | 31.5 | 34 | | | | | | | | | 6 | |
| 7 | 43 | 42 | 34 | 38 | 34 | 30 | 32 | 32 | 21.8 | | | | | | | 7 | |
| 8 | 37 | 35 | 34 | 34 | 34 | 29.5 | 28.9 | 31 | 20.8 | 25.3 | | | | | | 8 | |
| 9 | 32 | 31 | 30.7 | 30.8 | 31 | 27.5 | 26.4 | 29 | 18.9 | 23.2 | 20.5 | 16.7 | | | | 9 | |
| 10 | | 27 | 28.5 | 28.1 | 27.5 | 26 | 24.1 | 26 | 17.7 | 21.3 | 19.2 | 16 | 18.1 | 14.9 | | 10 | |
| 12 | | 21 | 21.8 | 20.9 | 22.5 | 22 | 20.4 | 22.5 | 15.8 | 18.4 | 17.5 | 14.4 | 16.2 | 13.6 | 12.6 | 12 | |
| 14 | | | 18 | 15.7 | 17.6 | 18.2 | 17 | 18.3 | 14.2 | 15.9 | 15.7 | 13.1 | 14.2 | 12.4 | 11.7 | 14 | |
| 16 | | | 14.5 | 12 | 13.9 | 15.3 | 13.4 | 14.6 | 12.8 | 13.8 | 14.2 | 11.9 | 12.7 | 11.3 | 10.8 | 16 | |
| 18 | | | | 9.3 | 11.3 | 12.6 | 10.7 | 12 | 11.8 | 11.5 | 12.4 | 10.8 | 11.2 | 10.2 | 10 | 18 | |
| 20 | | | | | 9 | 10.6 | 8.7 | 9.9 | 10.7 | 9.4 | 10.4 | 9.6 | 9.9 | 9.4 | 8.8 | 20 | |
| 22 | | | | | | 8.8 | 7 | 8.3 | 9.3 | 7.9 | 8.8 | 8.9 | 8.3 | 8.6 | 8.1 | 22 | |
| 24 | | | | | | | 5.7 | 7 | 8 | 6.6 | 7.5 | 8.1 | 7 | 7.7 | 7.4 | 24 | |
| 26 | | | | | | | | 6 | 6.9 | 5.5 | 6.4 | 7.2 | 6 | 6.7 | 6.4 | 26 | |
| 28 | | | | | | | | | 6 | 4.6 | 5.5 | 6.3 | 5.1 | 5.8 | 5.5 | 28 | |
| 30 | | | | | | | | | | 3.8 | 4.7 | 5.5 | 4.3 | 5 | 4.7 | 30 | |
| 32 | | | | | | | | | | | 4 | 4.8 | 3.7 | 4.4 | 4 | 32 | |
| 34 | | | | | | | | | | | | 4.2 | 3.1 | 3.8 | 3.5 | 34 | |
| 36 | | | | | | | | | | | | | 2.6 | 3.3 | 3 | 36 | |
| 38 | | | | | | | | | | | | | | 2.8 | 2.5 | 38 | |
| 40 | | | | | | | | | | | | | | | 2.1 | 40 | |
| 42 | | | | | | | | | | | | | | | 1.8 | 42 | |
| n | 12 | 11 | 6 | 6 | 6 | 5 | 6 | 6 | 4 | 4 | 4 | 4 | 4 | 3 | 3 | n | |
| 2nd | 0% | 50% | 0% | 100% | 50% | 0% | 100% | 50% | 0% | 100% | 50% | 0% | 100% | 50% | 100% | 2nd | |
| 3rd | 0% | 0% | 25% | 0% | 25% | 50% | 25% | 50% | 75% | 50% | 75% | 100% | 75% | 100% | 100% | 3rd | |
| 4th | 0% | 0% | 25% | 0% | 25% | 50% | 25% | 50% | 75% | 50% | 75% | 100% | 75% | 100% | 100% | 4th | |
| 5th | 0% | 0% | 25% | 0% | 25% | 50% | 25% | 50% | 75% | 50% | 75% | 100% | 75% | 100% | 100% | 5th | |

起重性能表

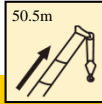
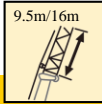
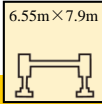

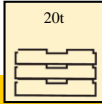
T 13~50.5 m

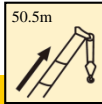
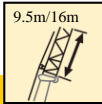
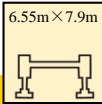

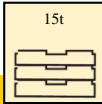
| | 13-50.5m | | 6.45m×7.9m | | 360° | | 15t | | | | | | | | | |
|-----|----------|------|------------|------|------|------|------|------|------|------|------|------|------|------|------|-----|
| | 13 | 17.6 | 20 | 22.3 | 24.7 | 27 | 29.4 | 31.7 | 34.1 | 36.4 | 38.8 | 41.1 | 43.5 | 45.8 | 50.5 | |
| 3 | 80 | 70 | | | | | | | | | | | | | | 3 |
| 3.5 | 75 | 68 | 34 | | | | | | | | | | | | | 3.5 |
| 4 | 70 | 67 | 34 | | | | | | | | | | | | | 4 |
| 4.5 | 66 | 63 | 34 | | | | | | | | | | | | | 4.5 |
| 5 | 60 | 60 | 34 | 40 | 34 | 31.5 | | | | | | | | | | 5 |
| 5.5 | 53 | 53 | 34 | 40 | 34 | 31.5 | | | | | | | | | | 5.5 |
| 6 | 48 | 48 | 34 | 40 | 34 | 31.5 | 34 | | | | | | | | | 6 |
| 7 | 40 | 40 | 34 | 38 | 34 | 30 | 32 | 32 | 21.8 | | | | | | | 7 |
| 8 | 34 | 34 | 34 | 33 | 34 | 29.5 | 28.9 | 31 | 20.8 | 25.3 | | | | | | 8 |
| 9 | 30 | 30 | 30.5 | 29 | 30 | 27.5 | 26.4 | 29 | 18.9 | 23.2 | 20.5 | 16.7 | | | | 9 |
| 10 | | 25.5 | 26.5 | 25 | 26.5 | 26 | 24.1 | 26 | 17.7 | 21.3 | 19.2 | 16 | 18.1 | 14.9 | | 10 |
| 12 | | 18.2 | 20.7 | 17.8 | 19.8 | 21.4 | 19.2 | 20.6 | 15.8 | 18.4 | 17.5 | 14.4 | 16.2 | 13.6 | 12.6 | 12 |
| 14 | | | 15.8 | 13.2 | 15 | 16.5 | 14.5 | 15.8 | 14.2 | 15.2 | 15.7 | 13.1 | 14.2 | 12.4 | 11.7 | 14 |
| 16 | | | 12.5 | 10 | 11.8 | 13.2 | 11.3 | 12.5 | 12.8 | 12 | 13 | 11.9 | 12.5 | 11.3 | 10.8 | 16 |
| 18 | | | | 7.7 | 9.4 | 10.8 | 8.9 | 10.1 | 11.2 | 9.6 | 10.6 | 10.8 | 10.1 | 10.2 | 10 | 18 |
| 20 | | | | | 7.6 | 9 | 7.1 | 8.3 | 9.3 | 7.8 | 8.8 | 9.6 | 8.3 | 9 | 8.6 | 20 |
| 22 | | | | | | 7.5 | 5.7 | 6.9 | 7.9 | 6.4 | 7.3 | 8.1 | 6.9 | 7.6 | 7.2 | 22 |
| 24 | | | | | | | 4.6 | 5.7 | 6.8 | 5.3 | 6.2 | 7 | 5.7 | 6.5 | 6.1 | 24 |
| 26 | | | | | | | | 4.8 | 5.8 | 4.4 | 5.2 | 6 | 4.8 | 5.5 | 5.1 | 26 |
| 28 | | | | | | | | | 4.9 | 3.5 | 4.4 | 5.2 | 4 | 4.7 | 4.3 | 28 |
| 30 | | | | | | | | | | 2.9 | 3.7 | 4.5 | 3.3 | 4 | 3.6 | 30 |
| 32 | | | | | | | | | | | 3.1 | 3.9 | 2.7 | 3.4 | 3 | 32 |
| 34 | | | | | | | | | | | | 3.4 | 2.2 | 2.9 | 2.5 | 34 |
| 36 | | | | | | | | | | | | | 1.8 | 2.5 | 2.1 | 36 |
| 38 | | | | | | | | | | | | | | 2.1 | 1.7 | 38 |
| 40 | | | | | | | | | | | | | | | 1.3 | 40 |
| n | 12 | 11 | 6 | 6 | 6 | 5 | 6 | 6 | 4 | 4 | 4 | 4 | 4 | 3 | 3 | n |
| 2nd | 0% | 50% | 0% | 100% | 50% | 0% | 100% | 50% | 0% | 100% | 50% | 0% | 100% | 50% | 100% | 2nd |
| 3rd | 0% | 0% | 25% | 0% | 25% | 50% | 25% | 50% | 75% | 50% | 75% | 100% | 75% | 100% | 100% | 3rd |
| 4th | 0% | 0% | 25% | 0% | 25% | 50% | 25% | 50% | 75% | 50% | 75% | 100% | 75% | 100% | 100% | 4th |
| 5th | 0% | 0% | 25% | 0% | 25% | 50% | 25% | 50% | 75% | 50% | 75% | 100% | 75% | 100% | 100% | 5th |

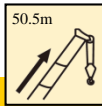
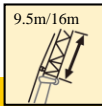
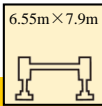
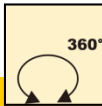
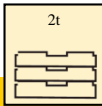


Rated load chart

J 10.5 m/17.5 m

|      | | | | | | | |
|---|-----|-----|-----|-----|-----|-----|----|
| 9.5m | | | | 16m | | | |
| | 0° | 15° | 30° | 0° | 15° | 30° | |
| 80 | 5.5 | 5.5 | 2.7 | 4.0 | 2.9 | 1.4 | 80 |
| 78 | 5.5 | 5.3 | 2.5 | 4.0 | 2.8 | 1.3 | 78 |
| 75 | 5.5 | 4.9 | 2.3 | 4.0 | 2.5 | 1.2 | 75 |
| 72 | 5.5 | 4.5 | 2.1 | 4.0 | 2.1 | 1.2 | 72 |
| 70 | 5.5 | 4.3 | 2.0 | 3.7 | 2.0 | 1.2 | 70 |
| 65 | 4.8 | 3.8 | 1.8 | 3.2 | 1.8 | 1.0 | 65 |
| 60 | 3.6 | 3.2 | 1.7 | 2.6 | 1.6 | | 60 |
| 55 | 2.9 | 2.6 | 1.7 | 2.1 | 1.5 | | 55 |
| 50 | 2.2 | 2.1 | 1.6 | 1.5 | 1.3 | | 50 |

|      | | | | | | | |
|---|-----|-----|-----|-----|-----|-----|----|
| 9.5m | | | | 16m | | | |
| | 0° | 15° | 30° | 0° | 15° | 30° | |
| 80 | 5.5 | 5.5 | 2.7 | 4.0 | 2.9 | 1.4 | 80 |
| 78 | 5.5 | 5.3 | 2.5 | 4.0 | 2.8 | 1.3 | 78 |
| 75 | 5.5 | 4.9 | 2.3 | 4.0 | 2.5 | 1.2 | 75 |
| 72 | 5.5 | 4.5 | 2.1 | 4.0 | 2.1 | 1.2 | 72 |
| 70 | 5.5 | 4.3 | 2.0 | 3.7 | 2.0 | 1.2 | 70 |
| 65 | 4.5 | 3.8 | 1.8 | 3.2 | 1.8 | 1.0 | 65 |
| 60 | 3.1 | 2.9 | 1.7 | 2.6 | 1.6 | | 60 |
| 55 | 2.2 | 2.1 | 1.7 | 1.8 | 1.5 | | 55 |
| 50 | 1.6 | 1.5 | 1.4 | 1.2 | 1.1 | | 50 |

|      | | | | | | | |
|---|-----|-----|-----|-----|-----|-----|----|
| 9.5m | | | | 16m | | | |
| | 0° | 15° | 30° | 0° | 15° | 30° | |
| 80 | 5.5 | 5.5 | 2.7 | 4.0 | 2.9 | 1.4 | 80 |
| 78 | 5.5 | 5.3 | 2.5 | 4.0 | 2.8 | 1.3 | 78 |
| 75 | 5.5 | 4.9 | 2.3 | 4.0 | 2.5 | 1.2 | 75 |
| 72 | 4.4 | 3.8 | 2.1 | 3.6 | 2.1 | 1.2 | 72 |
| 70 | 3.5 | 3.1 | 2.0 | 2.8 | 2.0 | 1.2 | 70 |
| 65 | 1.9 | 1.8 | 1.7 | 1.6 | 1.4 | 1.0 | 65 |

Description of symbols

General symbols



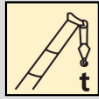








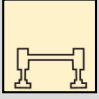




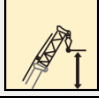


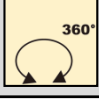
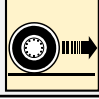
| | | | |
|--|---------------------------------|---|----------------------------|
|  | Superstructure |  | Chassis |
|  | Lifting capacity |  | Axle |
|  | Boom length |  | Travel speed |
|  | Working radius |  | Grade ability |
|  | Boom angle |  | Tires |
|  | Boom hoisting height |  | Outriggers |
|  | Fixed jib length |  | Hook block |
|  | Jib offset angle |  | Counterweight |
|  | Jib lifting height |  | Winch |
|  | Boom extension |  | 360° operation of the boom |
|  | Traveling with a load suspended | | |

Table of main technical parameters

| Category | Item | Unit | Parameter | |
|--------------------------------|--|--|-----------------|-------|
| Dimensions | Dimensions (L×W×H) | mm | 14985×2800×3790 | |
| | Axle spacing | mm | 1500+4600+1350 | |
| | Track (front/rear) | mm | 2400/2063 | |
| | Front overhang/rear overhang | mm | 2455/2565 | |
| | Front extension/rear extension | mm | 2390/125 | |
| Weight | Maximum permissible weight | kg | 45600 | |
| | Axle load | Axle 1 | kg | 10000 |
| | | Axle 2 | kg | 10000 |
| | | Axle 3 | kg | 12800 |
| | | Axle 4 | kg | 12800 |
| Power | Engine model | — | WP9H350E50 | |
| | Rated power/rotation speed | kW/(r/min) | 257/1900 | |
| | Max. net power/rotation speed | kW/(r/min) | 252/1900 | |
| | Max. output torque/rotation speed | N.m/(r/min) | 1700/1100-1400 | |
| Travel | Max. travel speed | km/h | ≥80 | |
| | Min. stable travel speed | km/h | 1.7~3 | |
| | Min. turning diameter | m | ≤24 | |
| | Min. turning diameter at boom head | m | ≤30.4 | |
| | Minimum ground clearance | mm | 373 | |
| | Approach angle | ° | 22 | |
| | Departure angle | ° | 13 | |
| | Braking distance (initial speed at 38.4km/h) | m | ≤15.2 | |
| | Max. grade ability (%) | % | 45 | |
| | Fuel consumption per 100 km | L | 43 | |
| | Noise | Exterior noise level when accelerating | dB(A) | ≤84 |
| Noise level at seated position | | dB(A) | ≤90 | |

Table of main technical parameters

| Category | Item | | Unit | Parameter | |
|---|--|---------------------------|------------|-----------|----|
| Main performance | Maximum rated lifting capacity | | t | 80 | |
| | Minimum rated working radius | | m | 3.0 | |
| | Turning radius at turntable tail | At counterweight | mm | 4460 | |
| | | At auxiliary winch | mm | 4293 | |
| | Maximum load moment | Base boom | kN.m | 2965 | |
| | | Fully-extended boom | kN.m | 1764 | |
| | | Fully-extended boom + jib | kN.m | 1237 | |
| | Outrigger span | Longitudinal | m | 6.545 | |
| | | Lateral | m | 7.9 (5.6) | |
| | Lifting height | Basic boom | m | 13.3 | |
| | | Fully-extended boom | m | 50.5 | |
| | | Fully-extended boom + jib | m | 65 | |
| | Boom length | Base boom | m | 13 | |
| | | Fully-extended boom | m | 50.5 | |
| Fully-extended boom + jib | | m | 66.5 | | |
| Jib offset angle | | | ° | 0, 15, 30 | |
| Working speed | Time for raising boom | | s | ≤55 | |
| | Time for fully extending the boom | | s | ≤125 | |
| | Max. slewing speed | | r/min | ≥1.8 | |
| | Time for extending / retracting the outriggers | Outrigger beam | Retracting | s | 30 |
| | | | Extending | s | 40 |
| | | Outrigger jack | Up | s | 30 |
| | | | Extending | s | 40 |
| Hoisting speed (single line, 4th layer, unloaded) | Main winch system | m/min | 135 | | |
| | Auxiliary winch | m/min | 90 | | |
| Noise | Exterior noise level | | dB (A) | 109 | |
| | Noise level at seated position | | dB(A) | 85 | |

Notes

1. The total rated load given in the rated load charts is the maximum lifting capacity when the crane is set up on firm and level ground. The total rated load includes the weight of the hook blocks and slings. To calculate the actual weight that could be lifted, the weight of hook blocks and slings should be deducted from the lifting capacities.
2. The working radius is the horizontal distance between the gravity center of load and the rotational axis of the crane superstructure measured on the ground when the load is lifted off ground, and it is the actual value including loaded boom deflection. Take boom deflection into consideration before beginning a lifting operation.
3. A lifting operation is permissible only when the wind force is below grade 5 (instantaneous wind speed of 14.1 m/s, wind pressure of 125N/m^2).
4. Before beginning lifting, the operator should know the weight of the load to be lifted and its working range, and should then select proper working conditions. Never operate the crane beyond the limit shown in the chart. Take the lower value from the chart when the boom length or working radius is between the range of values.
5. Observe the boom angle limit. Never operate the crane with the boom angle beyond the recommended limit even if a load is not being carried. Otherwise, the crane will tip.
6. Extend boom sections according to the specified percentage.



UNITED HEAVY EQUIPMENT & EARTH MOVERS PVT. LTD.

VOITH Complex | Ananda Nagar, Dhumbarahi, Nepal
Tel.: +977 01 4542901-05, Cell : +977 98512 17690
Fax : +977 01 4008813, P.O. Box: 233/2640
Email: info@uheem.com.np, Web: www.uheem.com.np