

XCMG FOR YOUR SUCCESS

XE215I-K

Hydraulic Excavator

Operation Weight: 21,500kg Rated Power: 104kw/2,000rpm Bucket Capacity: 1.0m³(HD)



UNITED HEAVY EQUIPMENT & EARTH MOVERS PVT. LTD.

VOITH Complex | Ananda Nagar, Dhumbrahi, Nepal
Tel.: +977 01 4542901-05, Cell : +977 98512 17690
Fax : +977 01 4008813, P.O. Box: 233/2640
Email: info@uheem.com.np, Web: www.uheem.com.np

Unparalleled Features

XCMG is committed to manufacturing the most advanced construction machinery and providing earth and rock solutions to customers around the world. Ensure customers get the best product performance experience with the lowest operating costs.

Comfortable Operating Environment

The model of excavator features a 270° wide field of vision experience, comfortable adjustable seat, huge cab space, safety locks and side glass to provide a comfortable and safe working environment for the driver.

A/C + Laminated Glass; Intelligent LED monitor;
Vibration absorption Cab;
Fops CAB.

Remarkable Power System

141.4HP / 2000 rpm;
Meet the Requirements of 52 °C;
Cummins Turbo-charged Engine;
High Efficient Radiator.

Outstanding Hydraulic System

Bigger Tunnel Diameter of Main Valve;
Smaller Pressure Loss.

Reinforced Work Devices

XCMG has strong engineering machinery design and manufacturing capabilities, and the key components of excavator components have been upgraded and transformed, which greatly improves the working durability and service life of the products.

Longer undercarriage and 9 bearing rollers strengthen chain link, grease pan and rail clamp, more stable;
Increase the thickness of the plate in the stress concentration area of the working device;
The boom is a box-shaped structure;
The double dovetail design is applied to the root of the boom;
Critical hinge points are upgraded to forgings.

Powerful Working Ability

1.0 HD/1.0 or 0.9 GP/1.1 EM;
5.68m Boom + 2.9/2.4m Arm;
Low-resistance High-wearability;
Bigger Digging Range;
Bucket digging resistance is reduced by more than 7%.



Working Conditions

Widely used in municipal engineering, farmland water conservancy, commercial housing, highway and bridge construction and other earthwork.

More Energy-efficient and Environment-friendly

Lower Fuel Consumption

XCMG's customized 6BT5.9 Cummins engine has strong power and stable performance. In particular, it has a characteristic curve of power and fuel consumption, which can set a common speed in the low-speed and high-torque section, so that the excavator has sufficient power and fuel-saving performance.

Optimize and upgrade various filters installed on the excavator to ensure efficient and comprehensive isolation of impurities, improve the adaptability of the engine to altitude, air quality, and oil quality, and can operate under various conditions such as high temperature, humidity and dust without will affect production efficiency.



Independent Pump Control Hydraulic System

In order to protect the hydraulic system and prolong the service life of the equipment, it needs the best and most stable hydraulic power, which is what XE215I-K provides for all customers.

The control system effectively avoids the work of the main pump under extreme conditions such as maximum flow, maximum power, and maximum pressure, and has good energy-saving effect.

In addition, after careful debugging and upgrading by XCMG, this main pump has many features, such as high-strength bearings, wear-resistant design, high power density, strong self-priming ability, long service life, stable system, reliable operation, convenient maintenance, Low noise etc.

It has been widely used in XCMG excavator products and won a good reputation.



Return on Investment

Smoother Operating

Main control valve developed for XE215I-K excavator;

Arm retraction and boom lowering regeneration Arm and boom holding valves;

Logic priority function valve;

Compact structure and multiple functions in one;

The midpoint throttling balances the pressure of the oil circuits at both ends, improving the durability of the working device;

Suitable for multi-action compound operation requirements of various high efficiency, low energy consumption and application places.



Higher Efficiency of Hard Soil Operation

The arm and bucket cylinders are thickened to increase the digging force so it's more efficient with hard soil operation.

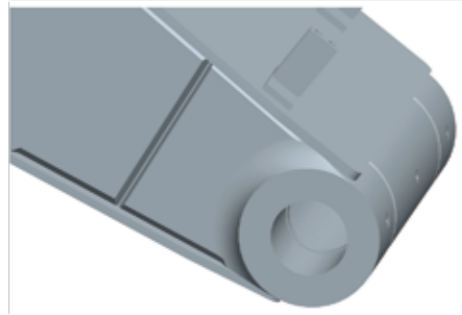
The front hinge point of the bucket moves forward to change the cutting angle of the bucket. Double-arc bucket design reduces frictional resistance at the bottom of the bucket.



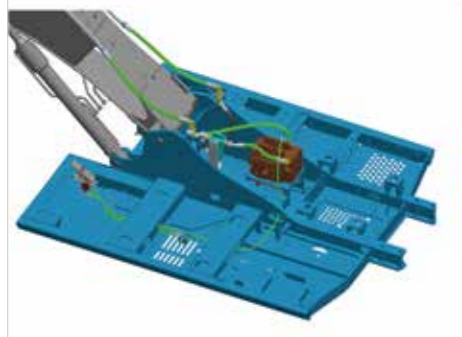
Comprehensive Upgrade



Comprehensively improve the reliability of the turntable



Reduce weld buildup and disperse stress



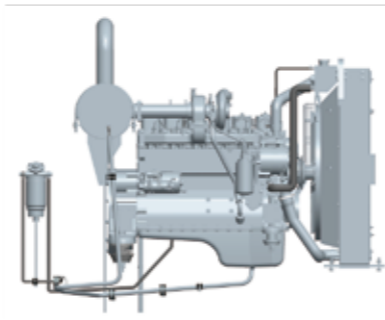
Improved pipeline to avoid high temperature of crushing pipeline



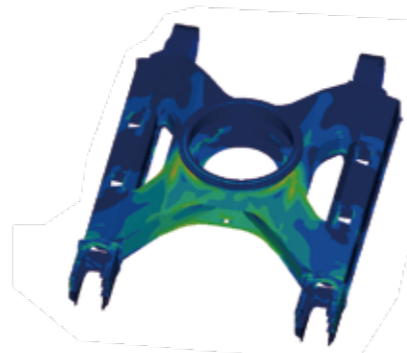
Reinforcing ribs and backing plates



Fully protected cab



Improves heat dissipation and pump life



Structural optimization reduces stress by 4%

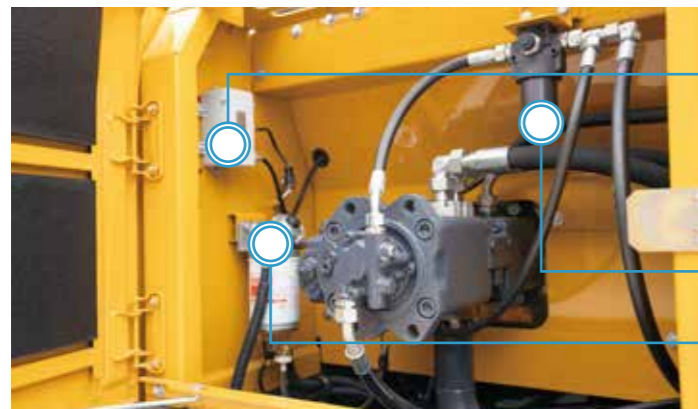
Superior Security

The cab is equipped with large-view windows, high-power air conditioners, and composite shock absorbers. No matter what kind of harsh conditions, operators can get a good operating experience. The integrated control panel greatly improves work efficiency, and can also understand the power and hydraulic system of the excavator in real time.



Positive pressure function cab
It can effectively prevent dust from entering the cab and provide a clean working environment for the operator.

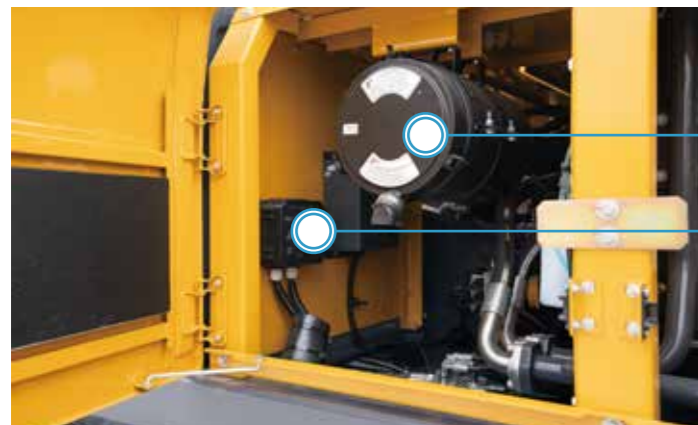
Convenient Maintenance



Throttle Driver

Pilot Filter

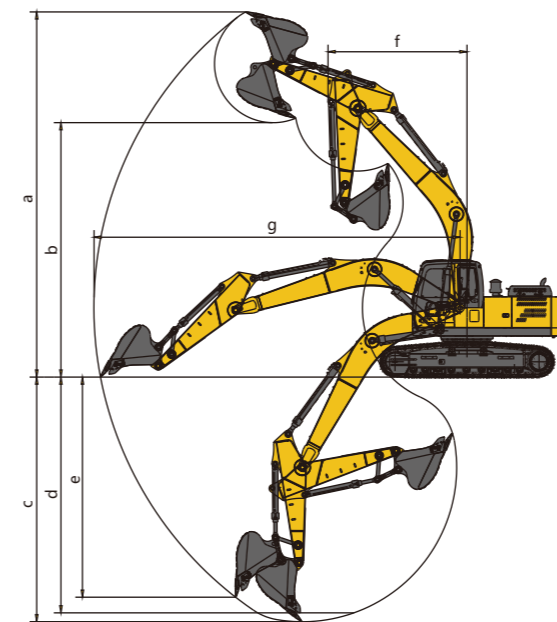
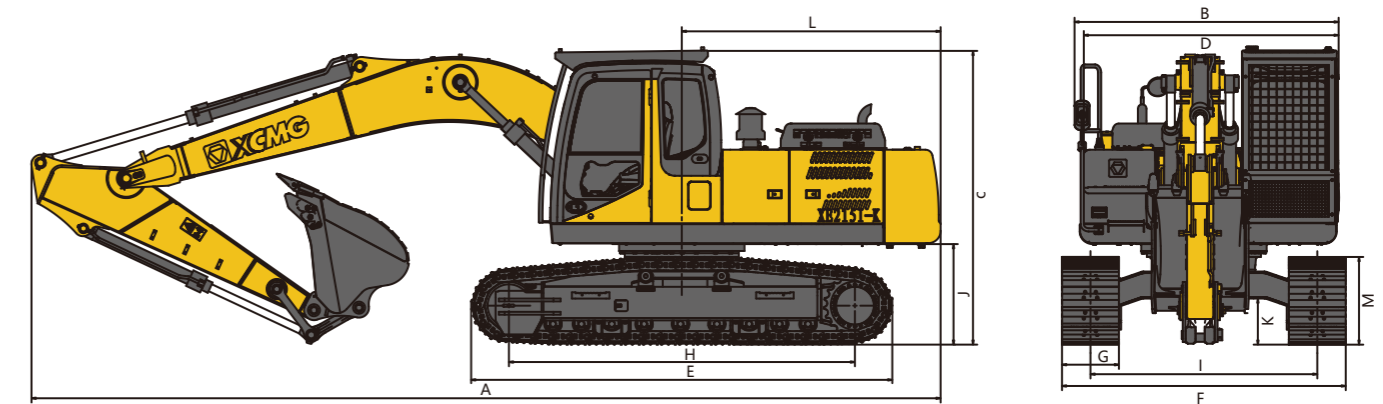
Oil Filter Element



Air Cleaner

Integrated Electrical Box

Model



Overall Dimensions		Unit:mm
A	Overall Length	9,582
B	Overall Width	2,800
C	Overall Height	3,034
D	Turntable Width	2,710
E	Track Length	4,445
F	Chassis Total Width	2,990
G	Track Width	600
H	Tumbler Distance	3,647
I	Track Gauge	2,390
J	Counterweight Clearance	1,000
K	Minimum Ground Clearance	477
L	Minimum Tail Swing Radius	2,728
M	Track Height	937

Working scope		Unit:mm
a	Maximum Digging Height	9,245
b	Maximum Dumping Height	6,440
c	Maximum Digging Depth	6,197
d	Maximum Depth Cut for 8 ft Level Bottom	-
e	Maximum Vertical Digging Depth	5,575
f	Maximum Digging Radius	9,440
g	Minimum Swing Radius	3,515

Model	Unit	XE215I-K
Operation Weight	kg	21,500
Bucket Capacity	m ³	1.0(HD)

Engine		
Model	/	6BT5.9
Direct Injection	/	√
Four Strokes	/	√
Water Cooling	/	√
Turbo-charging	/	√
Air to Air Intercooler	/	x
No. of Cylinders	/	6
Rated Power	kw/rpm	104/2,000
Maximum Torque/Speed	N·m	564/1,600
Displacement	L	5.9

Main Performance		
Travel Speed (H/L)	km/h	5.2/2.8
Swing Speed	r/min	13.0
Gradeability	°	≤35
Ground Pressure	kPa	47.4
Bucket Digging Force	kN	150
Arm Digging Force	kN	131
Maximum Traction Force	kN	184

Model	Unit	XE215I-K
Hydraulic System		
Main Pump	/	Two Piston Pump
Rated Flow of Main Pump	L/min	2×224
Pressure of Main Valve	MPa	34.3/37
Pressure of Travel System	MPa	34.3
Pressure of Swing System	MPa	28
Pressure of Pilot System	MPa	3.9

Oil Capacity		
Fuel Tank Capacity	L	360
Hydraulic Tank Capacity	L	220
Engine Oil Capacity	L	16

Standard		
Boom Length	mm	5,680
Arm Length	mm	2,400
Bucket Capacity	m ³	1.0(HD)

Optional		
Boom Length	mm	-
Arm Length	mm	2,900
Bucket Capacity	m ³	0.9/1.0 (GP) 1.1 (EM)

Lifting Point Height(m)	Rated Lift Capacity – straight Ahead (back) (kg)					Lifting Capacity at Maximum Radius	Rated Lift Capacity – over-side (kg)					Lifting Capacity at Maximum Radius
	Lifting Point Radius (m)						Lifting Point Radius (m)					
	1.5	3	4.5	6	7.5		1.5	3	4.5	6	7.5	
7.5						*5237						4488
6				*4891		*4455				4332		3273
4.5			*8118	*5306		4174			6262	4175		2734
3			*9019	*6019	4343	3807			5978	3940	2832	2470
1.5			*9232	5875	4221	3675			5498	3714	2715	2372
Ground			8874	5696	4127	3760			5243	3557	2626	2401
-1.5		*9153	8770	5612		4061		*9153	5155	3479		2487
-3		*13887	8845	5649		4907		9947	5223	3518		3107
-4.5			*8237			*7029			5419			4508

Capacities marked with an asterisk(*) are limited by hydraulic capacities.

Customization

Engine	
Engine Model	6BT5.9
Emission Class	National II
Oil-water Separator with Water Level Indicator Sensor	√
Radial Sealed Air Filter	√
50°C High Temperature Cooling Components	√
Cleanable Radiator	√
The Fuel Oil Mark	√
Oil and Water Quick Release Device	√
Automatic Idle Speed	√

Hydraulic System	
Boom/Arm Flow Regeneration	√
Reverse Rotary Damping Valve	√
Automatic Rotary Parking Brake	√
Straight Hydraulic Circuit	√
Boom Priority Valve	√
Rotary Logic Valve	√
Hydraulic Fluid ISO VG 46	√
Hydraulic Pipeline: Crushing Hammer and Thumb Pliers	○
Hydraulic Fluid ISO VG32, 68	○
Rotary Anti-sway Valve	√
Spare Valve Plates	√

Safety Configurations	
Cab Locks and Cabin Locks	√
Alarm Horn	√
Rearview Mirror	√
Isolation Plate between Engine and Oil Pump Chamber	√
Rear Window Emergency Exit	√
Battery Disconnect Switch	√
Boom&arm Safety Valve	√
Overheat Alarm Mode	√
Safety Handrails and Pedals	√
Rotating Warning Light	○
Anti-skid Plate / Anti-skid Sticker	√
Hydraulic Safety Master Locking Lever	√
Emergency Escape Hammer	√
Left and Right Rearview Mirror	√
Counterweight Rearview Mirror	○
Rollover Protection Structure Rops	○
Falling Object Protection Structure (Fops)	○
Buzzer (According to Country Requirements)	○

Chassis System and Shield	
Idler and Mid-track Monorail Guard	√
Underframe Tow Ring	√
Grease Lubricated Tracks	√
600mm (24 ") Three-rib Track Shoes	√
Protection Device Kit: Bottom Cover Plate of Chassis, Travel Motor Cover Plate	√
700mm (28 ") Three-rib Track Shoes	○
800mm (32") Three-rib Track Shoes	○
Extended Chassis	√
Track Rubber Block	○

Flashlight	
Boom Work Light	√
Right Side Work Light Mounted On Storage Compartment	√
Cab Interior Lighting	√
Cab Mounted Work Lights	○

Cab and Interior	
Pressurized Cab	√
Fully Adjustable Mechanical Suspension Seat	√
Adjustable Suspension Seat/Headrest/Armrest	√
Adjustable Seat Armrest	√
Seat Belt (51mm [2"] Wide)	√
Openable Front Windshield with Assist Device	√
70/30 Split Front Windshield	√
Double Laminated Windshields and other Tempered Windows	√
Two-way Air Conditioner with Defroster (Automatic) (Pressurization Function)	√
Color Lcd with Warning Message, Filter/ Fluid Change Information and Working Hours	√
Sliding Door Upper Window	√
Pillar Mounted Upper Windshield Wiper and Washer	√
Joystick	√
Ride Control Pedal with Removable Manual Lever	√
Two Stereo Speakers	√
Coat Hook	√
Openable Roof Hatch	√
Washable Floor Mats	√
Fire Extinguisher	○
Air Conditioning System	√
High and Low Speed Shifting	√
One-click Boost Mode	√
Sliding Front Window	√
Top Sunroof	√
Cab Interior Lights	√
Storage Boxes and Coat Hooks	√
Cigarette Lighter/Backup Power	○
Cup Holder/Document Bag	√
Lcd Liquid Crystal Monitor	√
Radio	√

Working Equipment	
Boom 5.68m	√
Arm 2.4m	√
Arm 2.9m	○
1.0m ³ Rock Bucket	√
0.9/1.0m ³ Reinforced Bucket	○
1.1m ³ Earthwork Bucket	○
Hammer	○

Electrical System	
Battery (2 X750 CCA)	√
75A Alternator	√
3.7kw Starter Motor	√
Cab-mounted Rotating Warning Light	○
Walking Alarm	○
24V Cigarette Lighter	○
5V USB Interface	√
24V Power Interface	√

Counterweight	
3.82t Counterweight	√

√- Standard configuration ○- Optional