

# XCMG FOR YOUR SUCCESS

## XE140I-K

Hydraulic Excavator

Operation Weight: 13,600kg    Rated Power: 75kw/2,200rpm    Bucket Capacity: 0.65m<sup>3</sup>(HD)



**UNITED HEAVY EQUIPMENT &  
EARTH MOVERS PVT. LTD.**

VOITH Complex | Ananda Nagar, Dhumbarahi, Nepal  
Tel.: +977 01 4542901-05, Cell : +977 98512 17690  
Fax : +977 01 4008813, P.O. Box: 233/2640  
Email: [info@uheem.com.np](mailto:info@uheem.com.np), Web: [www.uheem.com.np](http://www.uheem.com.np)

## Unparalleled Features

XCMG is committed to manufacturing the most advanced construction machinery and providing earth and rock solutions to customers around the world. Ensure customers get the best product performance experience with the lowest operating costs.

### Reinforced Work Devices

The design and manufacturing capability of XCMG excavators has effectively improved the reliability and durability of parts, and greatly improved the service life of parts. Forgings are used at key hinge points.

The arm adopts a box structure. Increasing the thickness of the plate in local area.

The root of the boom adopts double swallow-tailed design.

### Powerful Working Ability

0.65 HD / 0.72 GP;  
4.6m Boom + 2.1m Arm;  
Low-resistance High-wearability;  
Bigger Digging Range

### Comfortable Operating Environment

The machine features a 270° wide field of vision experience, comfortable adjustable seats, huge cab space, safety locks and side glass to provide a comfortable and safe working environment for the driver.

Fops CAB;  
Vibration Absorption Cab;  
A/C + Laminated Glass;  
Intelligent LED Monitor

### Remarkable Power System

CUMMINS Turbo-charged Engine;  
High Efficient Radiator System  
100.6HP / 2200 rpm;  
Meet the Requirements of 52 °C

### Outstanding Hydraulic System

Bigger Tunnel Diameter of Main Valve;  
Smaller Pressure Loss



# Working Conditions

Widely used in municipal engineering, farmland water conservancy, commercial housing, highway and bridge construction and other earthwork.

## More Energy-efficient & Environment-friendly

### Lower Fuel Consumption

The Cummins engine customized by XCMG has a characteristic curve of power and fuel consumption, and can set the common speed in the low-speed and high-torque section, so that the excavator has sufficient power and fuel-saving performance.

Various filters installed in the excavator, make sure the engine is extremely adaptable and can operate in a variety of conditions, such as high temperature, humidity and dust, without compromising production efficiency.



### Independent Pump Control Hydraulic System

The main pump has been precisely debugged by XCMG and perfectly matched with the engine.

The combination of various control functions can make full use of the engine power and automatically adjust the pump flow according to the change of the load. This feature enables the engine to work under rated power and the economical range of fuel consumption, providing a stable and sufficient power supply for the excavator while effectively reducing fuel consumption.



In addition, the main pump has the characteristics of high-strength bearing, wear-resistant design, high power density, strong self-absorption capacity, long service life, stable system, reliable operation, convenient maintenance and low noise.

## Return on Investment

### Smoother Operating

Suitable for multi-action compound operation requirements of various high efficiency, low energy consumption and application places.

The main valve has a compact structure and is highly integrated with multiple functions:

The main valve recovers and utilizes the flow when the boom is lowered or the stick is recovered, which speeds up the action and saves energy;

The mid-point throttling balances the pressure of the oil circuits at both ends, which improves the excavator's controllability and coordination, and prolongs the service life of the working device.



### Higher Efficiency of Hard Soil Operation

The arm and bucket cylinders are thickened to increase the digging force so it's more efficient with hard soil operation.

The front hinge point of the bucket moves forward to change the cutting angle of the bucket. Double-arc bucket design reduces frictional resistance at the bottom of the bucket.



## Comprehensive Upgrade



Fuel Tank with Additional Ribs and Pads



Turntable Adopts Rigid Box Structure



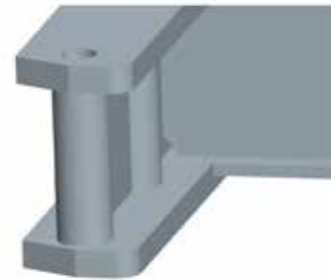
Engine Mount Structural Reinforcement



The Turntable Side Beam Adopts D-tube Structure



Structural Reinforced Link Lever



The Main Body Adopts H-shape Beam Rigid Structure



Extended Undercarriage



Disperse the Concentrated Stress

## Superior Security

The cab is equipped with large-view windows, high-power air conditioners, and shock absorbers. No matter what kind of harsh conditions, operators can get a good operating experience. The integrated control panel greatly improves work efficiency, and can also understand the power and hydraulic system of the excavator in real time.



**Positive pressure function cab**  
It can effectively prevent dust from entering the cab and provide a clean working environment for the operator.

## Convenient Maintenance



The engine cover can be completely open with the assistance of a gas spring, making it convenient for check or repair.

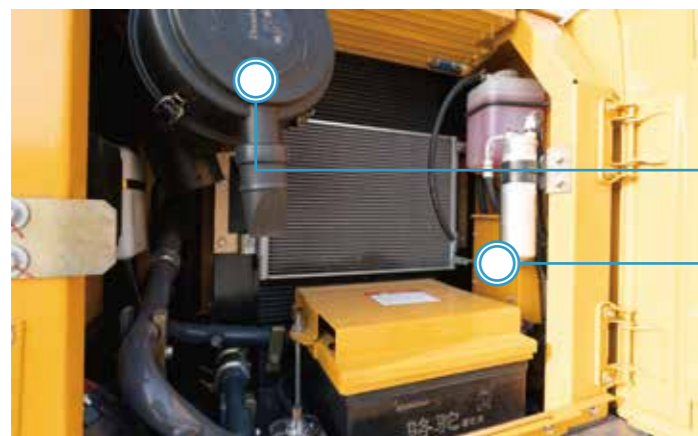
Engine filter, diesel filter, air filter and pilot hydraulic oil filter are arranged on reasonable positions where are easy to maintain.



Pilot Oil Filter

Transparent Fuel Water Separator

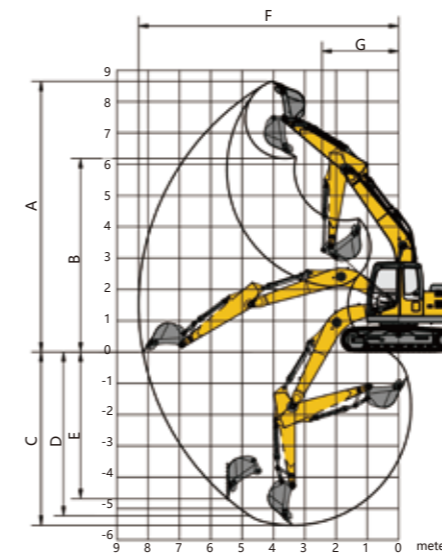
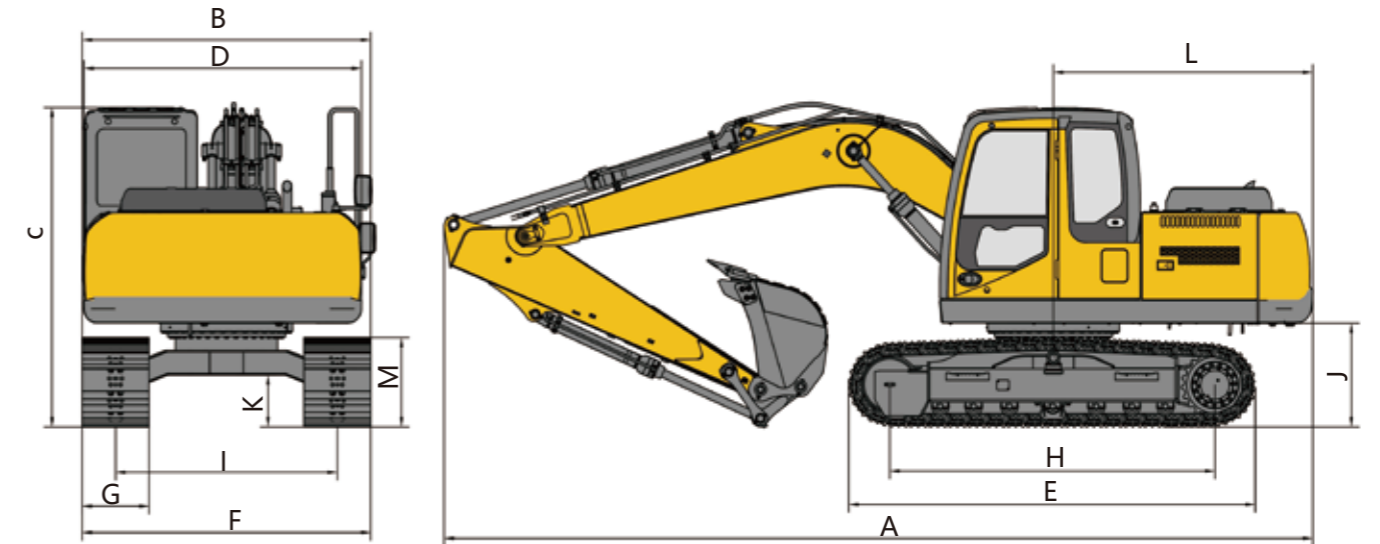
Oil Filter Element



Air Cleaner

Integrated Electrical Box

## Model



Overall Dimensions		Unit:mm
A	Overall Length	7,770
B	Overall Width	2,512
C	Overall Height	2,880
D	Turntable Width	2,512
E	Track Length	3,660
F	Chassis Total Width	2,490
G	Track Width	500
H	Tumbler Distance	2,910
I	Track Gauge	1,990
J	Counterweight Clearance	964
K	Minimum Ground Clearance	478
L	Minimum Tail Swing Radius	2,294
M	Track Height	838

Working scope		Unit:mm
a	Maximum Digging Height	8,440
b	Maximum Dumping Height	6,011
c	Maximum Digging Depth	5,126
d	Maximum Depth Cut for 8 ft Level Bottom	4,897
e	Maximum Vertical Digging Depth	4,609
f	Maximum Digging Radius	7,933
g	Minimum Swing Radius	2,335

Model	Unit	XE140I-K
Operation Weight	kg	13,600
Bucket Capacity	m <sup>3</sup>	0.65(HD)

Engine		
Model	/	B3.9
Direct Injection	/	√
Four Strokes	/	√
Water Cooling	/	√
Turbo-charging	/	√
Air to Air Intercooler	/	x
No. of Cylinders	/	4
<b>Rated Power</b>	kw/rpm	75/2,200
Displacement	L	3.9

Main Performance		
Travel Speed (H/L)	km/h	5.16/3.03
Swing Speed	r/min	12.3
Gradeability	°	≤35
Ground Pressure	kPa	42
Bucket Digging Force	kN	99
Arm Digging Force	kN	74
Maximum Traction Force	kN	134

Model	Unit	XE140I-K
Hydraulic System		
Main Pump	/	Two Piston Pump
Rated Flow of Main Pump	L/min	2×126
Pressure of Main Valve	MPa	31.4/34.3
Pressure of Travel System	MPa	34.3
Pressure of Swing System	MPa	25
Pressure of Pilot System	MPa	3.9

Oil Capacity		
Fuel Tank Capacity	L	250
Hydraulic Tank Capacity	L	130
Engine Oil Capacity	L	14

Standard		
Boom Length	mm	4,600
Arm Length	mm	2,100
Bucket Capacity	m <sup>3</sup>	0.65(HD)

Optional		
Boom Length	mm	/
Arm Length	mm	/
Bucket Capacity	m <sup>3</sup>	0.72(GP)

Lifting Point Height(m)	Rated Lift Capacity – straight Ahead (back) (kg)				Lifting Capacity at Maximum Radius	Rated Lift Capacity – over-side (kg)				Lifting Capacity at Maximum Radius
	Lifting Point Radius (m)					Lifting Point Radius (m)				
	1.5	3	4.5	6		1.5	3	4.5	6	
6			*3242		*2956			*3242		*2956
4.5			*3438		*2618			*3438		2567
3		*5662	*4186	*3592	*2573		*5662	3869	2523	2189
1.5			*5097	3738	*2706			3623	2421	2058
Ground		*7128	5569	3647	*3039		6123	3448	2338	2090
-1.5	*4953	*8647	5496		3651	*4953	6082	3384		2347
-3		*7392	*5015		*4430		6195	3429		3117

Capacities marked with an asterisk(\*) are limited by hydraulic capacities.

## Customization

Engine	
Engine Model	B3.9
Emission Class	National II
Oil-water Separator with Water Level Indicator Sensor	√
Radial Sealed Air Filter	√
50°C High Temperature Cooling Components	√
Cleanable Radiator	√
The Fuel Oil Mark	√
Oil and Water Quick Release Device	√
Automatic Idle Speed	√

Hydraulic System	
Boom/Arm Flow Regeneration	√
Reverse Rotary Damping Valve	√
Automatic Rotary Parking Brake	√
Straight Hydraulic Circuit	√
Boom Priority Valve	√
Rotary Logic Valve	√
Hydraulic Fluid ISO VG 46	√
Hydraulic Pipeline: Crushing Hammer and Thumb Pliers	○
Hydraulic Fluid ISO VG32, 68	○
Rotary Anti-sway Valve	√
Spare Valve Plates	√

Safety Configurations	
Cab Locks and Cabin Locks	√
Alarm Horn	√
Rearview Mirror	√
Isolation Plate between Engine and Oil Pump Chamber	√
Rear Window Emergency Exit	√
Battery Disconnect Switch	√
Boom & Arm Safety Valve	√
Overheat Alarm Mode	√
Safety Handrails and Pedals	√
Rotating Warning Light	○
Anti-skid Plate / Anti-skid Sticker	√
Hydraulic Safety Master Locking Lever	√
Emergency Escape Hammer	√
Left and Right Rearview Mirror	√
Counterweight Rearview Mirror	○
Rollover Protection Structure ROPS	○
Falling Object Protection Structure (FOPS)	○
Buzzer (According to Country Requirements)	○

Chassis System and Shield	
Idler and Mid-track Monorail Guard	√
Underframe Tow Ring	√
Grease Lubricated Tracks	√
500mm (20 ") Three-rib Track Shoes	√
Protection Device Kit: Bottom Cover Plate of Chassis, Travel Motor Cover Plate	√
600mm (24 ") Three-rib Track Shoes	○
700mm (28 ") Three-rib Track Shoes	○
Track Rubber Block	○

Flashlight	
Boom Work Light	√
Right Side Work Light Mounted on Storage Compartment	√
Cab Interior Lighting	√
Cab Mounted Work Lights	○

Cab and Interior	
Pressurized Cab	√
Fully Adjustable Mechanical Suspension Seat	√
Adjustable Suspension Seat/Headrest/Armrest	√
Adjustable Seat Armrest	√
Seat Belt (51mm [2"] Wide)	√
Openable Front Windshield with Assist Device	√
70/30 Split Front Windshield	√
Double Laminated Windshields and Other Tempered Windows	√
Two-way Air Conditioner with Defroster (Automatic) (Pressurization Function)	√
Color LCD with Warning Message, Filter/ Fluid Change Information and Working Hours	√
Sliding Door Upper Window	√
Pillar Mounted Upper Windshield Wiper and Washer	√
Joystick	√
Ride Control Pedal with Removable Manual Lever	√
Two Stereo Speakers	√
Coat Hook	√
Openable Roof Hatch	√
Washable Floor Mats	√
Fire Extinguisher	○
Air Conditioning System	√
High and Low Speed Shifting	√
One-click Boost Mode	√
Sliding Front Window	√
Top Sunroof	√
Cab Interior Lights	√
Storage Boxes and Coat Hooks	√
Cigarette Lighter/Backup Power	○
Cup Holder/Document Bag	√
LCD Liquid Crystal Monitor	√
Radio	√

Working Equipment	
Boom 4.6m	√
Arm 2.1m	√
0.72m <sup>3</sup> Reinforced Bucket	○
0.65m <sup>3</sup> Rock Bucket	√
Hammer	○

Electrical System	
Battery (2 x750 CCA)	√
45A Alternator	√
3.7kW Starter Motor	√
Cab-mounted Rotating Warning Light	○
Walking Alarm	○
24V Cigarette Lighter	○
5V USB Interface	√
24V Power Interface	√

Counterweight	
2.26t Counterweight	√

√- Standard configuration ○- Optional